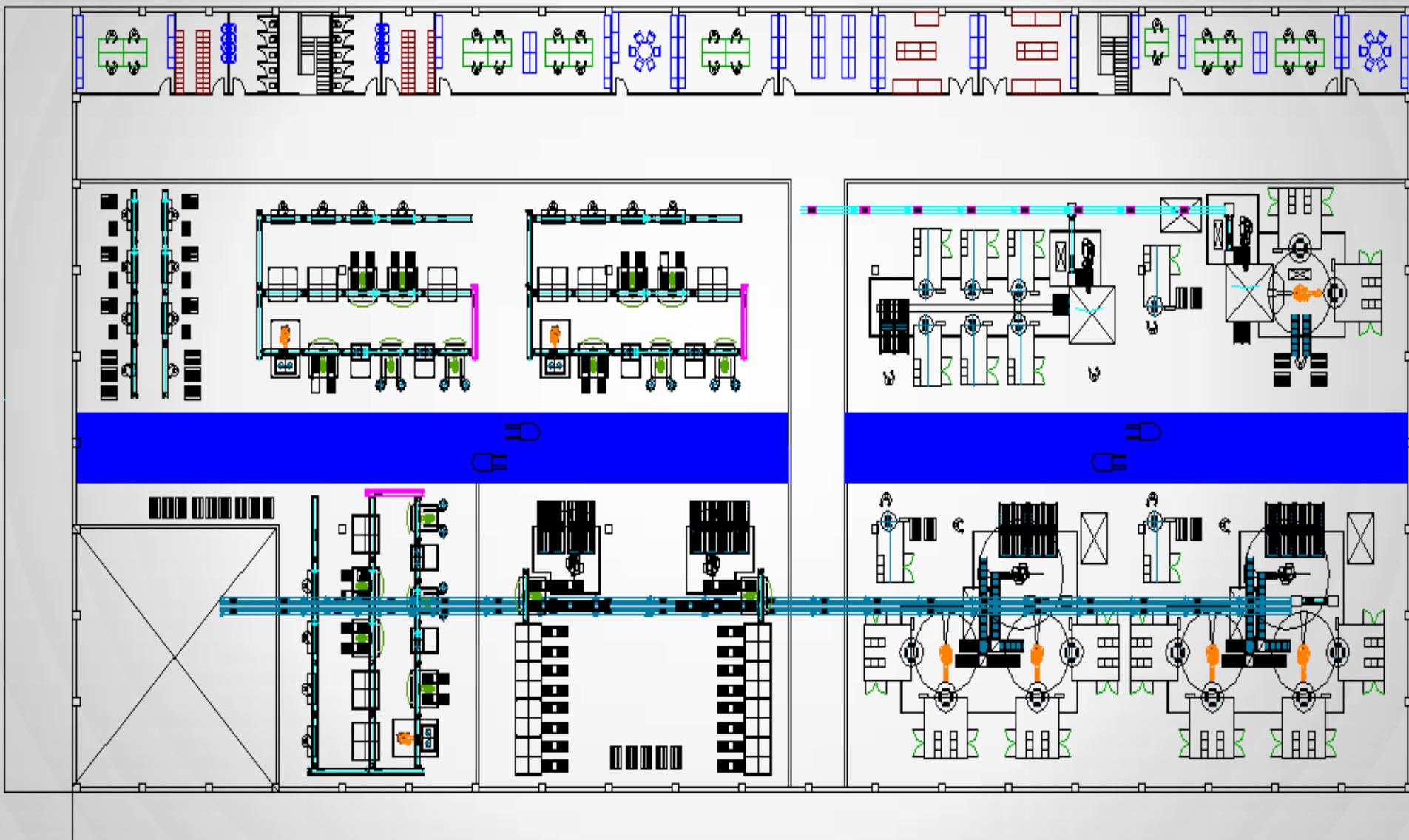




Verso la digital Factory

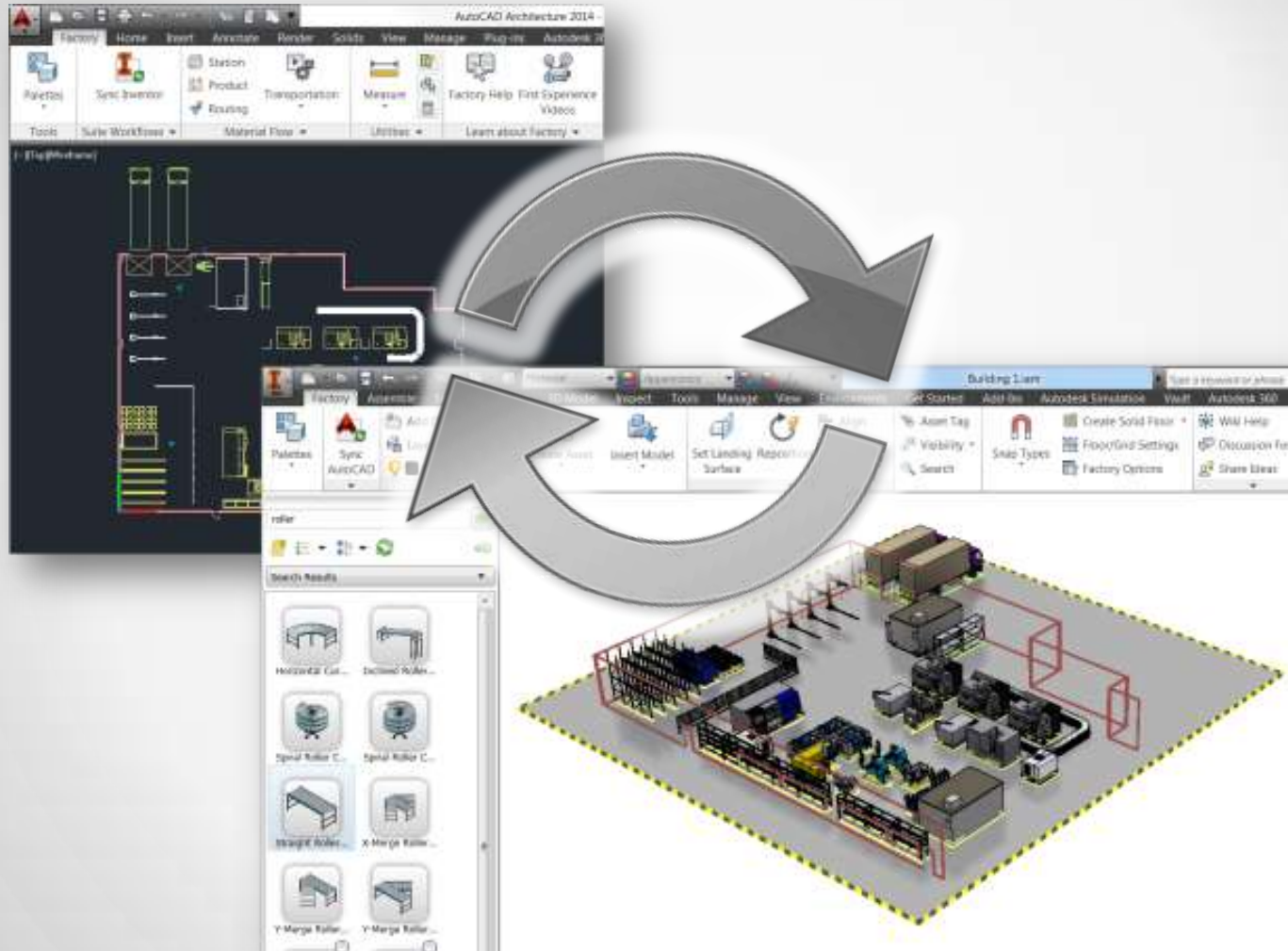
Matteo Arcidiaco
Territory Sales Autodesk

Processo di progettazione di oggi

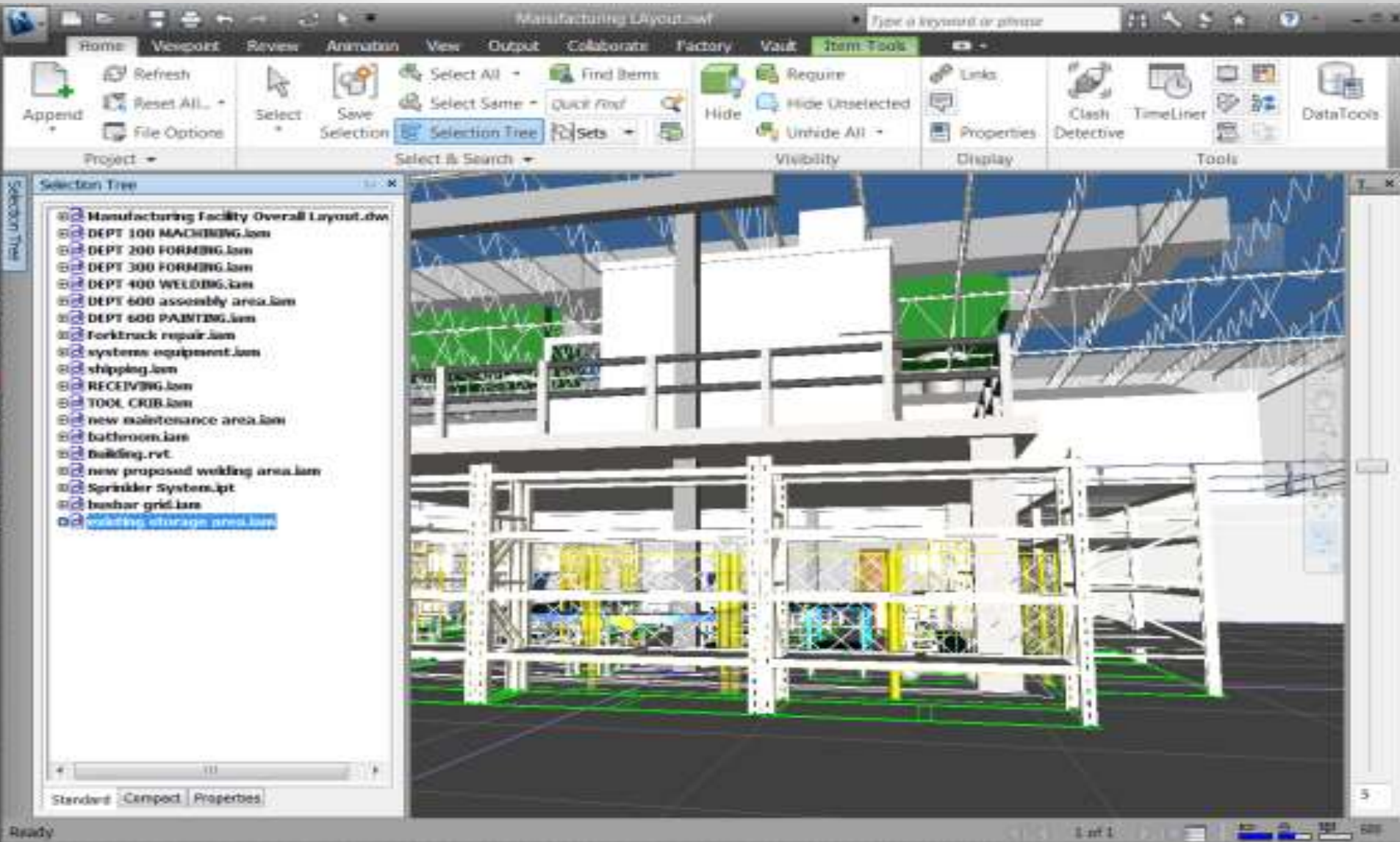


2D 4D

Dal 2D al 3D



Engineering review & analysis



Process Analysis

AUTODESK Process Analysis > Projects > Assembly lin

Save

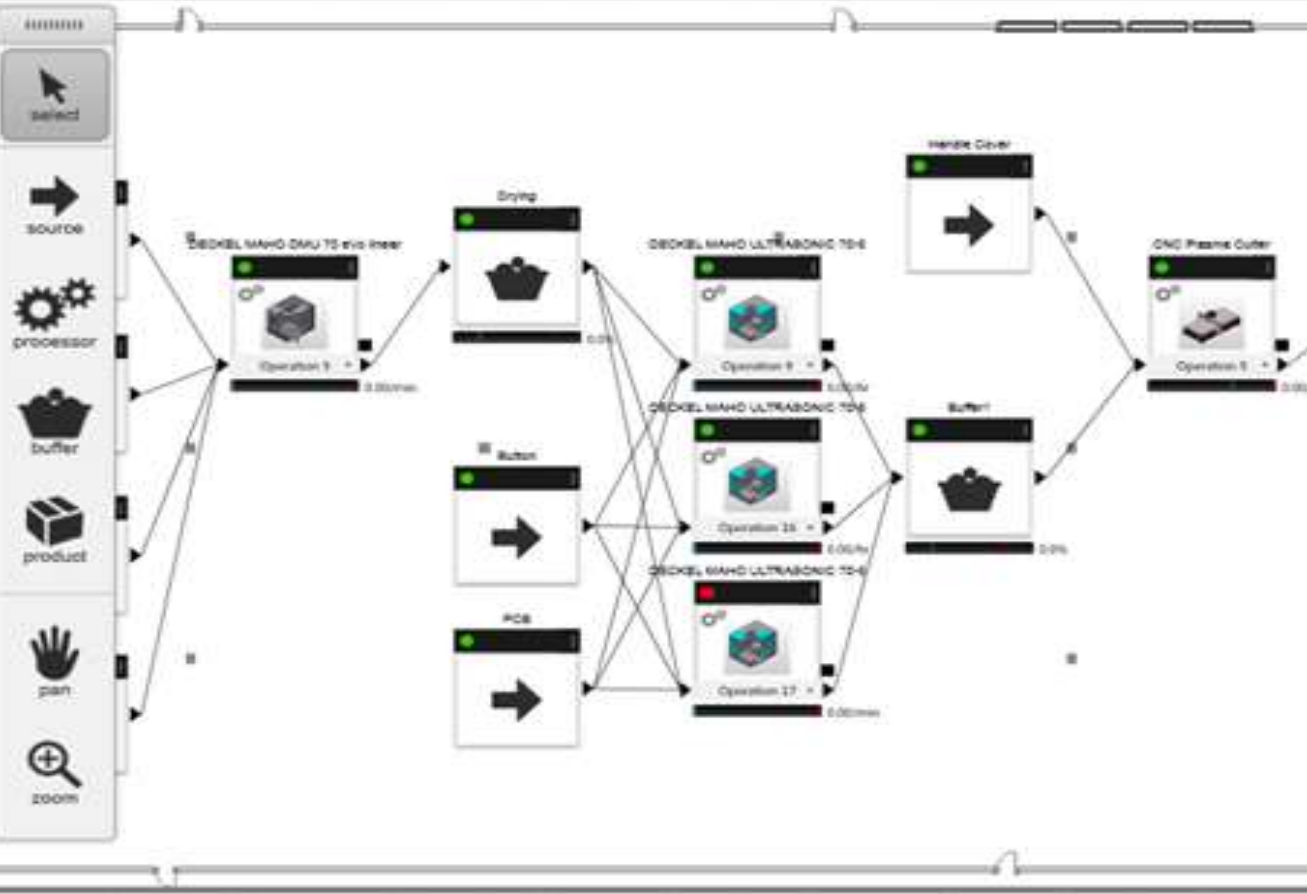
properties reports factory options

Factory Assets

Search

Material Handling

- Automatic G...
- Cart
- Container An...
- Lift
- Pallet
- Rack System
- RailRoad
- All-Steel Spill...
- Aluminum G...
- Aluminum PL...
- Automatic G...
- Bar Cradle Tr...
- Barrel Handler
- Box Car
- Bulk Container



Umanoidi 3D

The screenshot displays the RAMSIS - NIOSH Lifting Analysis software interface. The main window shows a 3D model of a worker (blue figure) in a warehouse setting, interacting with a stack of boxes and a conveyor belt. A smaller, darker figure is also visible on the conveyor belt. The software interface includes a menu bar (Model, Assembly View), a toolbar, and a main window with tabs for General, Tasks, and Result. The Tasks tab is active, showing a table of lifting parameters.

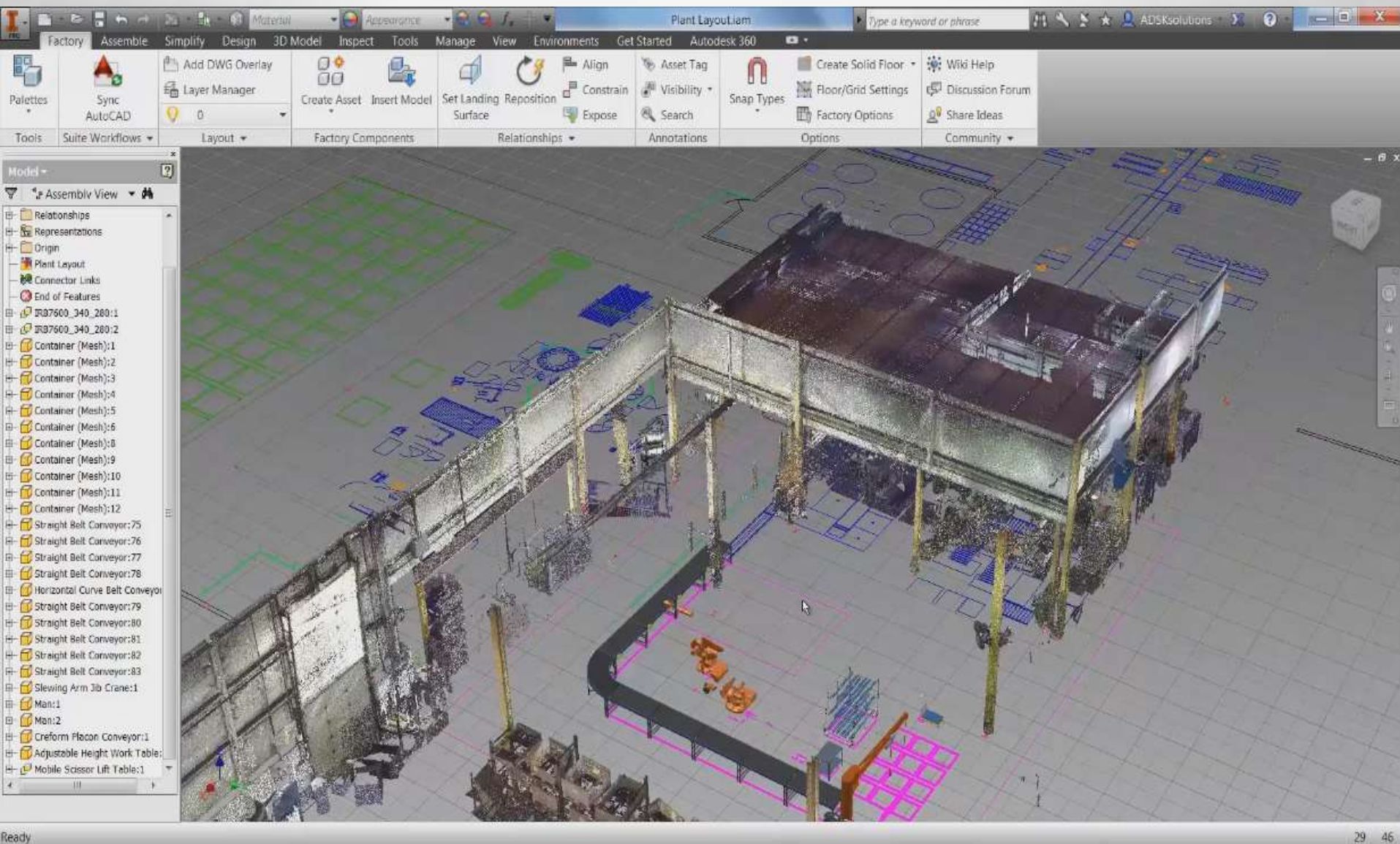
Duration >>	Control >>	Coupling >>	Horizontal (Start) [cm]	Vertical (Start) [cm]	Asymmetry (Start) [°]	Horizontal (End) [cm]	Vertical (End) [cm]	Asymmetry (End) [°]
1 long (2-8 h)	yes	fair	32,7	174,1	0,0	35,7	75,0	0,0
2								

Buttons at the bottom of the table include: Insert, Delete, Select All, Deselect All, Set Start, Set End, Apply, Open..., Save As..., Protocol..., and Close.

The left sidebar shows a hierarchical tree structure of the 3D model:

- Man:1
- Box:1
- Pallet:1
 - Component Pattern 2:1
 - Element:1
 - Element:2
 - Component Pattern 1:2
 - Element:1
 - Element:2
 - Element:3
 - Element:4
 - Element:5
 - Element:6
- Pallet:2
- Component Pattern 8:1
- Box:8
- Component Pattern 9:1
- Manikin:1
- Woman:1

Integrazione con la nuvola di punti



Trend Tecnologici del 21° secolo

Cloud



Mobile



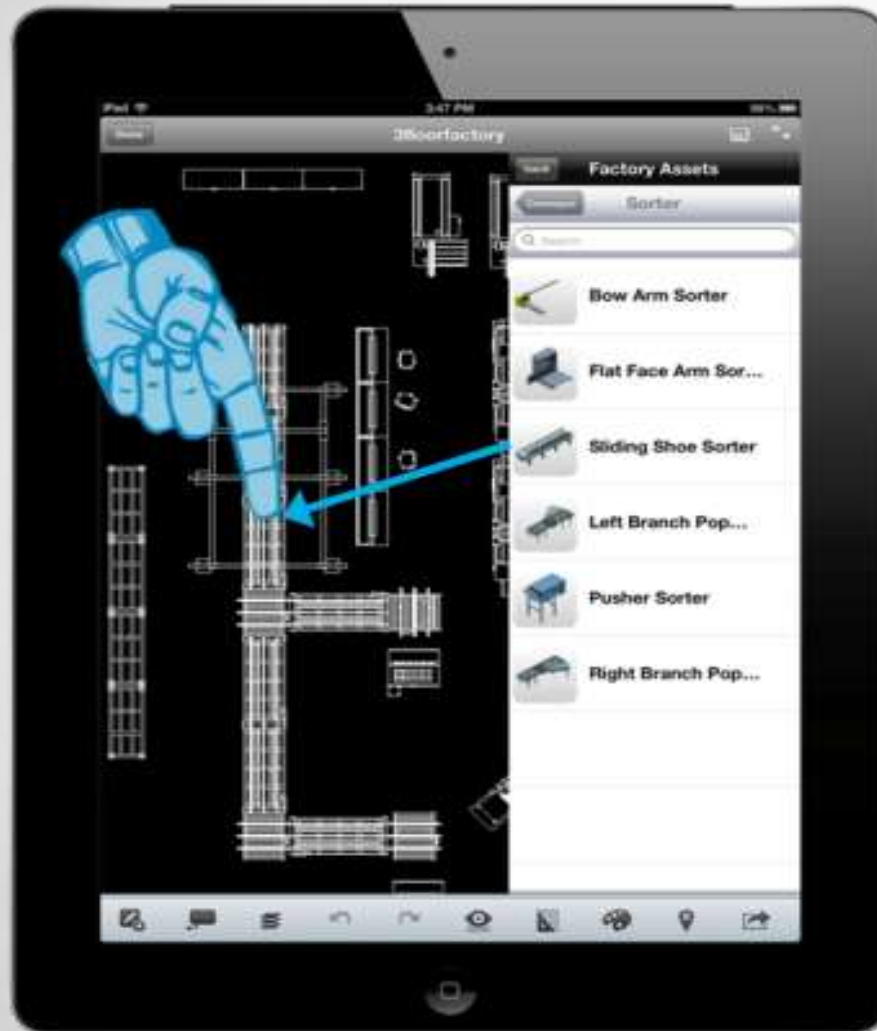
Social



3D printing
& Maker
Movement



Digital Factory Mobile

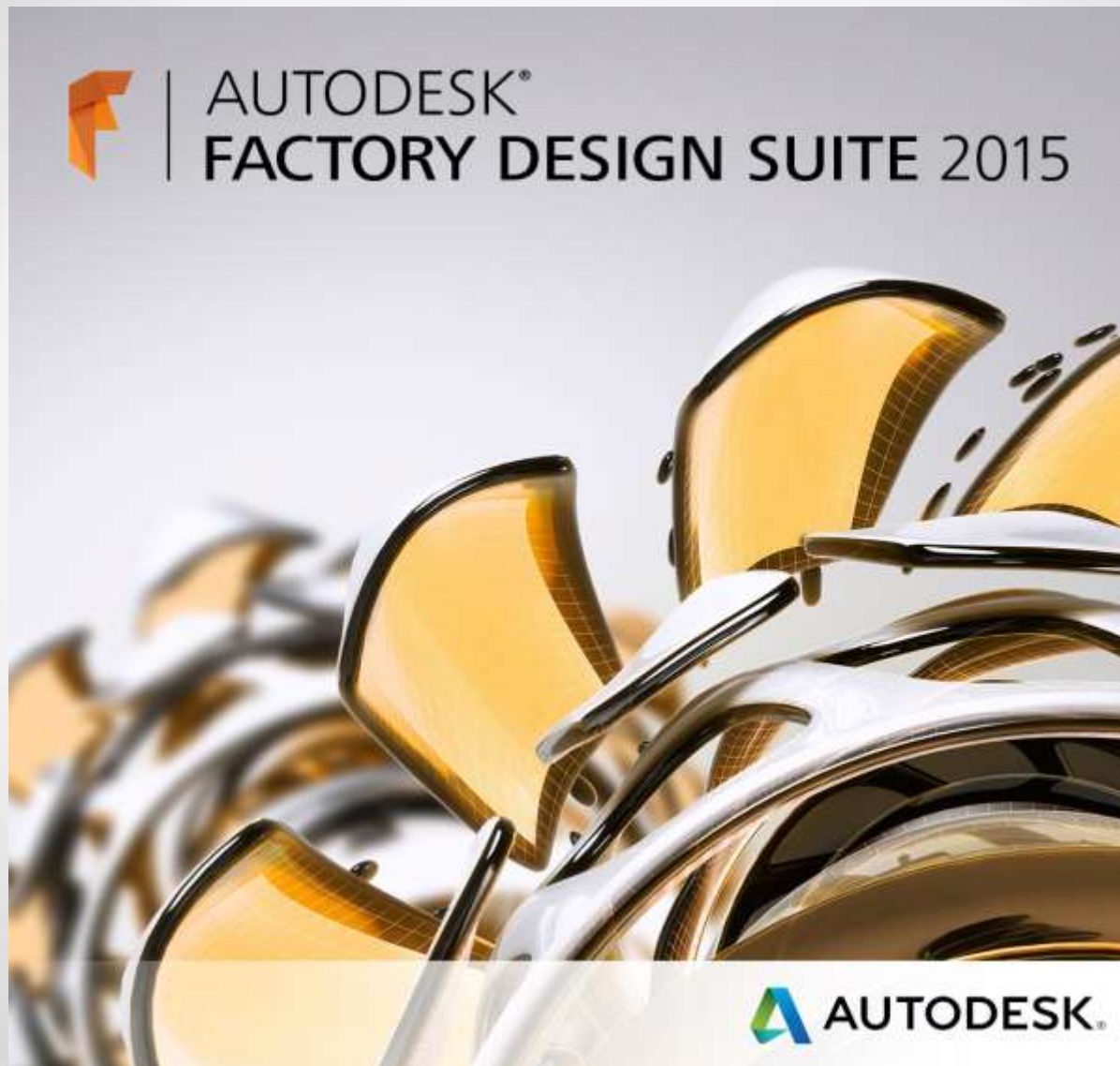


**FACTORY
DESIGN SUITE**

Factory Virtual Reality



La Digital Factory secondo Autodesk





Autodesk, the Autodesk logo, AutoCAD, Autodesk Inventor, Inventor, Navisworks, ReCap, Showcase, and 3ds Max are registered trademarks or trademarks of Autodesk, Inc., and/or its subsidiaries and/or affiliates in the USA and/or other countries. All other brand names, product names, or trademarks belong to their respective holders. Autodesk reserves the right to alter product and services offerings, and specifications and pricing at any time without notice, and is not responsible for typographical or graphical errors that may appear in this document.