



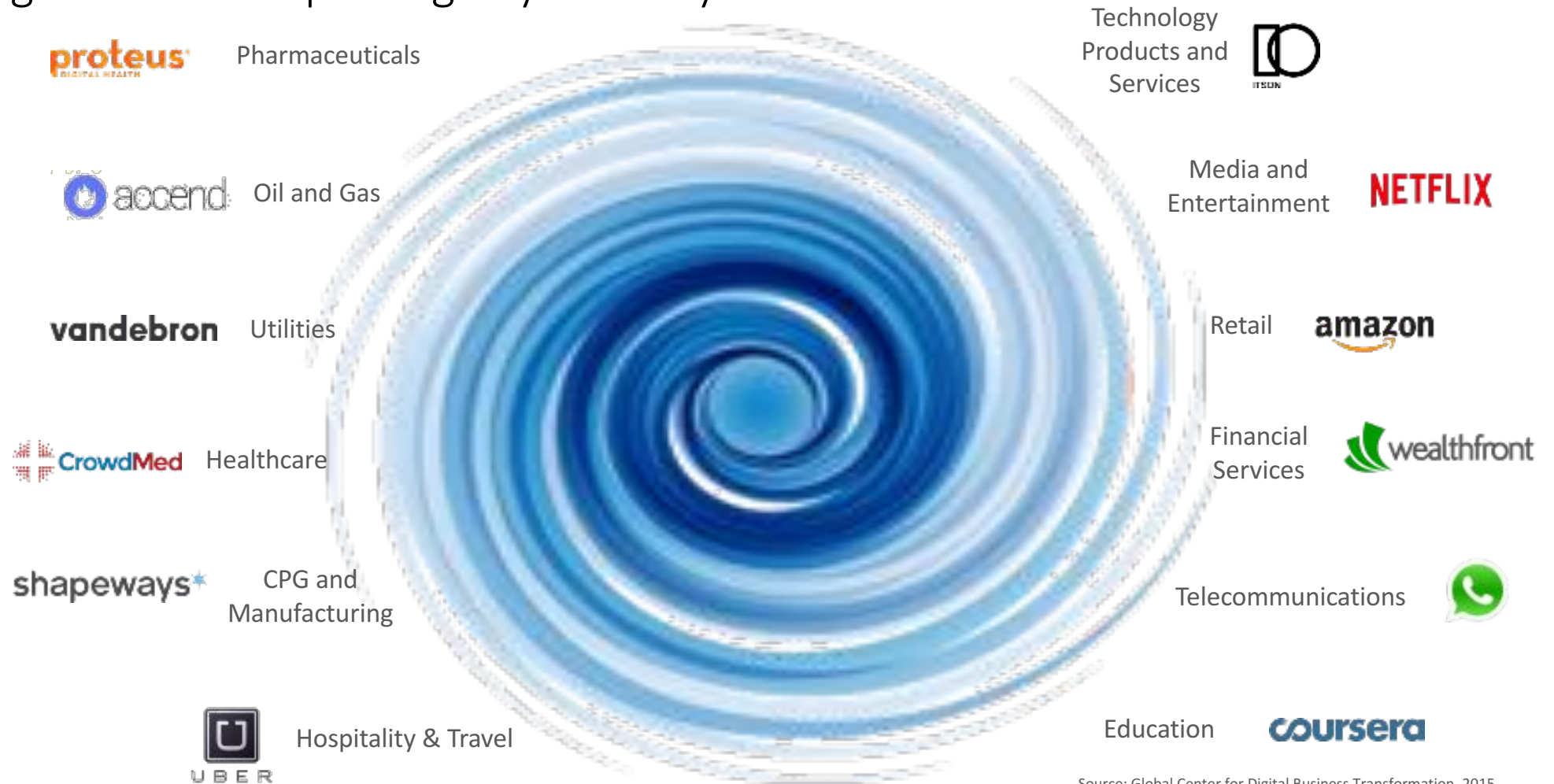
Industry4.0 / Smart Manufacturing

Digitization of Manufacturing

Masi Matteo

Sales Specialist – Industry 4.0

Digital Vortex impacting any industry



Source: Global Center for Digital Business Transformation, 2015



#DIGITALIANI

STRATEGIC INFRASTRUCTURES

INNOVATION AND
EDUCATION

SMART CITIES AND
PUBLIC SERVICES



ECONOMICAL INNOVATION





CHANGE

Is the New Status Quo



Industry 4.0 = Digital Transformation of Manufacturing

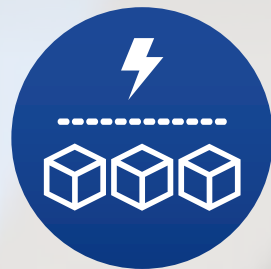
The use of technology
to radically improve operations.

Industry4.0 - A New Industrial Revolution

Digitizing Manufacturing to Capture the Value of the Internet of Everything



18th Century
Steam



20th Century
Mass Production



70's
Robots



Today
Digitization + Smart
Automation

It's all about combining technology to define new innovative solutions

Source: SCM World/Cisco "Smart Manufacturing & the Internet of Things 2015" survey of 418 Manufacturing Business Line Executives and Plant Managers across 17 vertical industries.

© 2015 Cisco Confidential

Global Manufacturing Challenges Ahead...

Increasing Complexity

Increasing Cost Pressure

Diverging Markets

Production Flexibility

Value Chain Insight

Product Servitisation

Changing Customer Behaviors

Competitive Landscape

Technology Advances

Innovations & Insights



Digital Manufacturing Driving Business Outcomes



**Reduced
Downtime**

48%

Unplanned downtime
down



**Reduction in
Defects**

49%

Defect rate
down



**New Product
Introduction**

23%

New product
introduction cycle
time reduced



**OEE
Improvement**

16%

Average OEE
improved



**Improved
Inventory**

35%

Inventory
turns increased



**Reduction in
Energy Use**

18%

Annual energy
cost down

Industry4.0: The power of combination

Government plan

<http://www.mise.gov.it>



Iperammortamento e Superammortamento

Investimenti innovativi



Investimenti in tecnologie Agrifood, Bio-based economy e a supporto dell'ottimizzazione dei consumi energetici

Agevolazioni previste

Iperammortamento

- Incremento aliquota per investimenti I4.0

Attuale

140%



Proposta

250%

Superammortamento

- Proroga del superammortamento con aliquota al **140%** ad eccezione di veicoli ed altri mezzi di trasporto che prevedono una maggiorazione ridotta al **120%**

Tempistiche

- Al fine di garantire la massima attrattività della manovra, estensione dei termini per la consegna del bene al **30/06/18** previo ordine e acconto >20% entro il 31/12/17

Fonte: Confindustria; MATTM; MEF; MiPAAF; MISE; R.E TE. Imprese Italia



Investimenti innovativi: Benefici concreti per le imprese

Iperammortamento



Esempio:
Investimento in beni
I4.0 per 1.000.000 €

OGGI

Superammortamento: **140%** del
valore ammortizzabile
→ riduzione tasse pagate in 5 anni
pari a **96.000€**

DOMANI

Iperammortamento: **250%** del
valore ammortizzabile beni I4.0
→ riduzione delle tasse pagate
in 5 anni pari a **360.000€**

+275%

Credito d'imposta alla ricerca



Esempio:
Spesa incrementale
per 1.000.000 €
• 800.000 € interna
• 200.000 € esterna

OGGI

Credito d'imposta **300.000 €**
(In caso di spesa maggiore limite
massimo a **5.000.000 €**)

DOMANI

Credito d'imposta **500.000 €**
(In caso di spesa maggiore limite
massimo a **20.000.000 €**)

fino a
+300%

Finanza a supporto di I4.0, VC e start-up



Esempio:
Investimento per
1.000.000 € in start-
up innovative

OGGI

Detrazione fiscale: **19%**
Investimento massimo per
contribuente: **0,5 €M**
→ Detrazione fiscale pari a
95.000 €/ anno

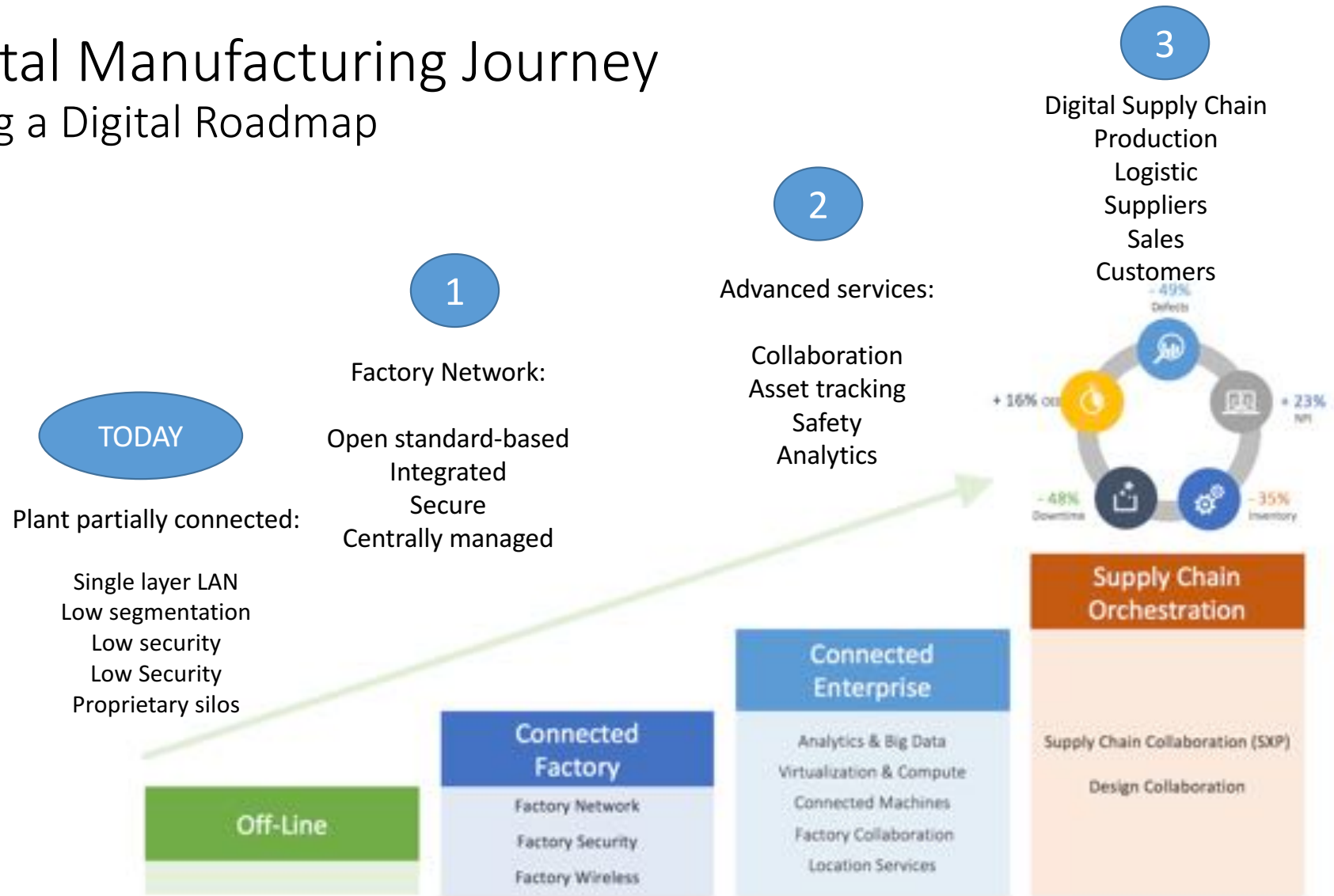
DOMANI

Detrazione fiscale: **30%**
Investimento massimo per
contribuente: **1,0 €M**
→ Detrazione fiscale pari a
300.000 € / anno

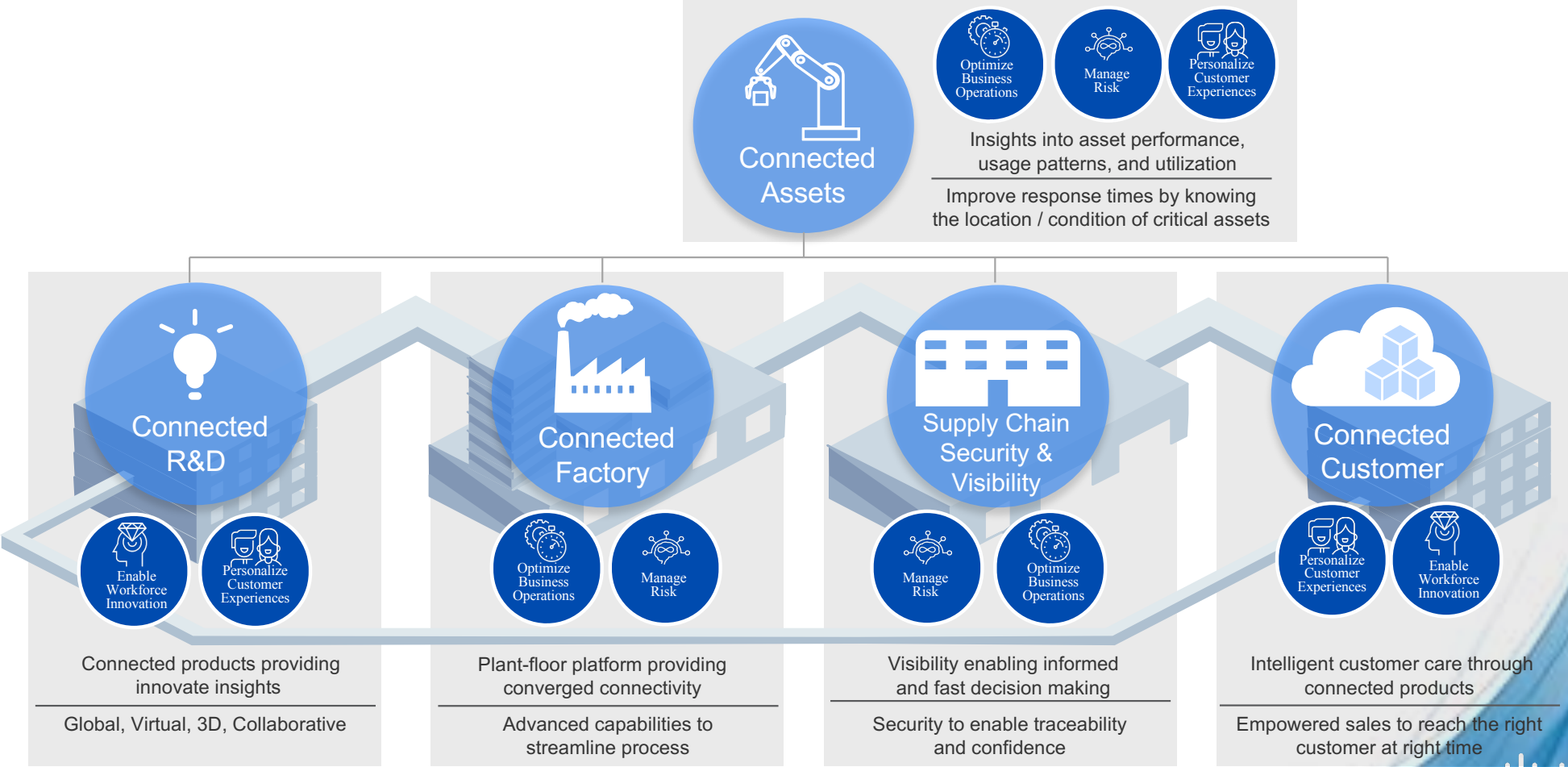
+215%



Digital Manufacturing Journey Along a Digital Roadmap



Manufacturing Digitization Across The Value Chain

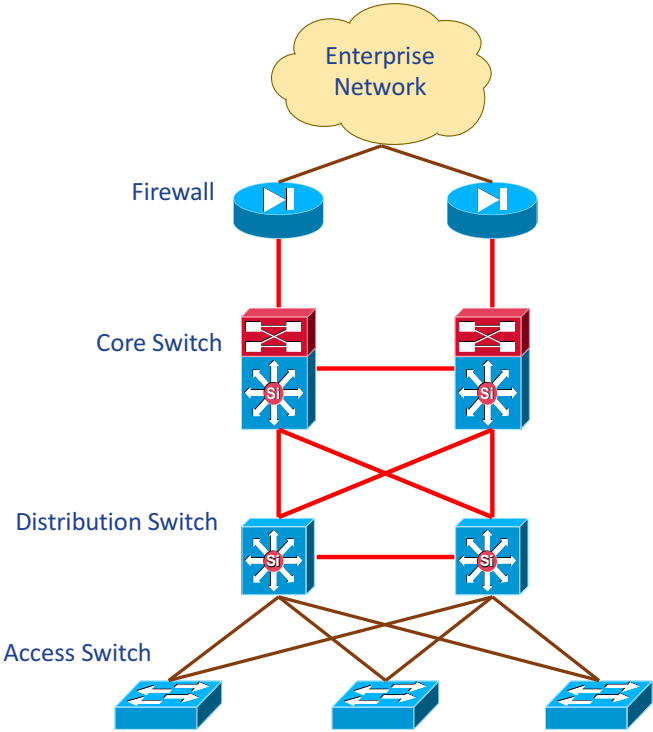


Cisco to create the ecosystem to drive the roadmap

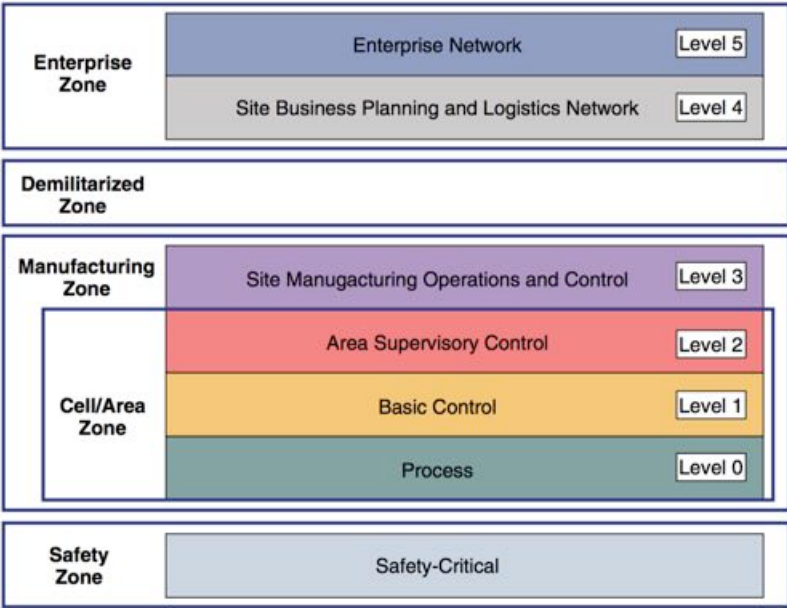


Converged Plantwide Ethernet Architecture

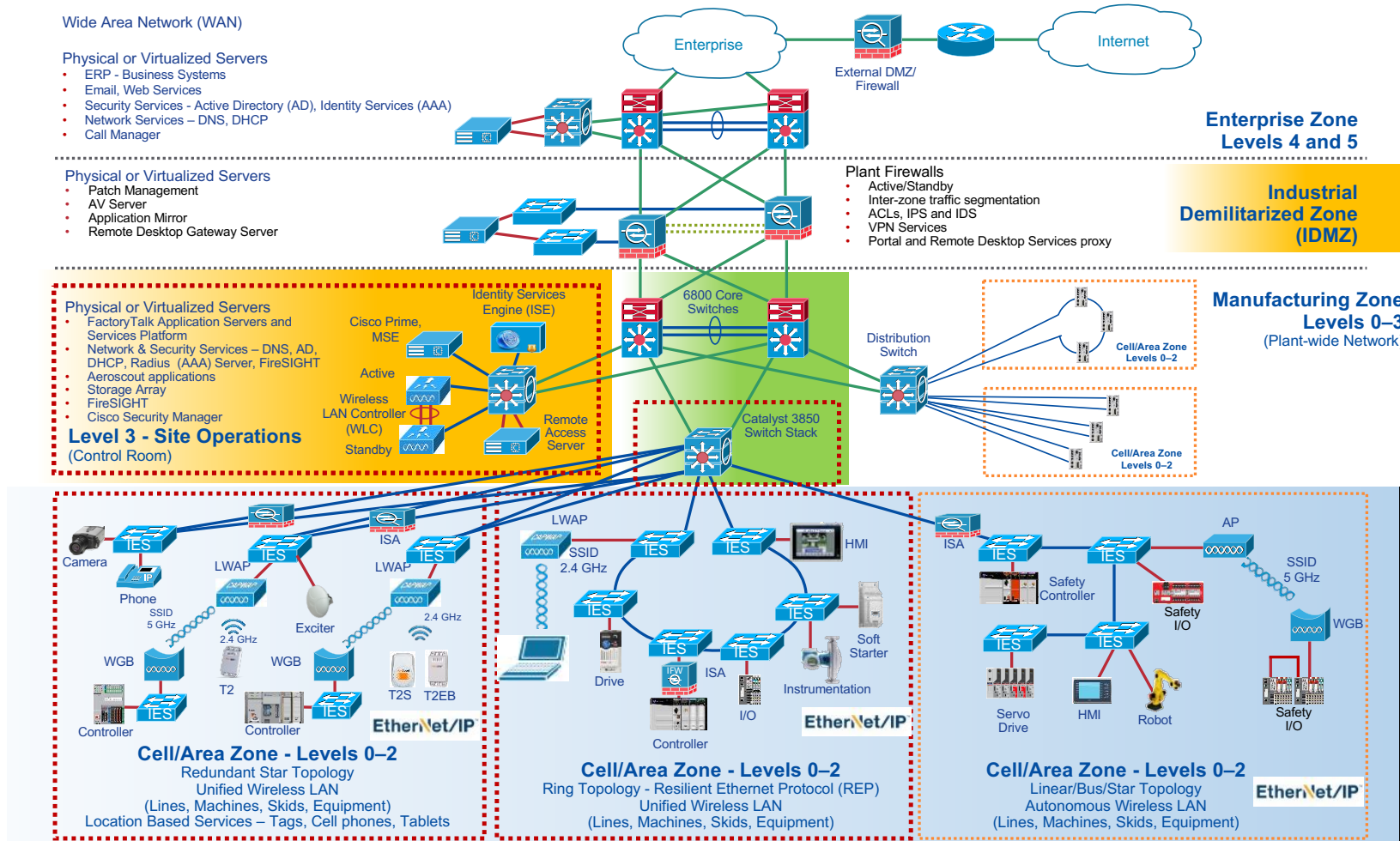
Enterprise Network reference model



IACS (Industrial Automation and Control Systems) reference model



Converged Plantwide Ethernet Architecture (CPwE)

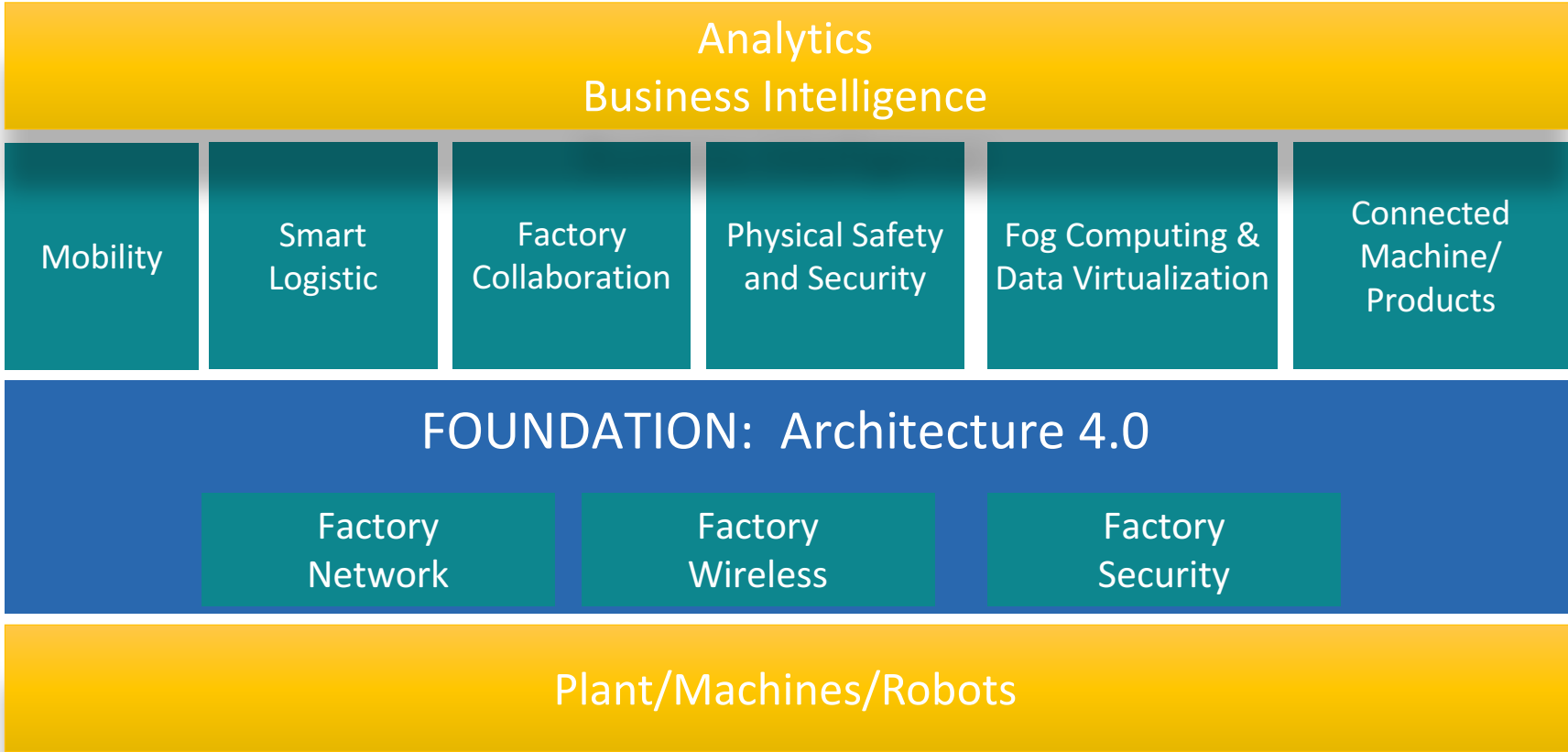




Industry4.0 Solutions



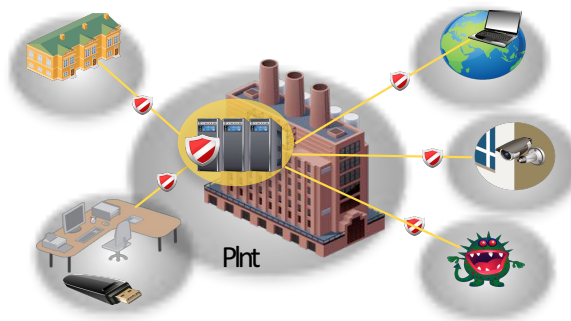
Industry4.0 Infrastructure and Solutions



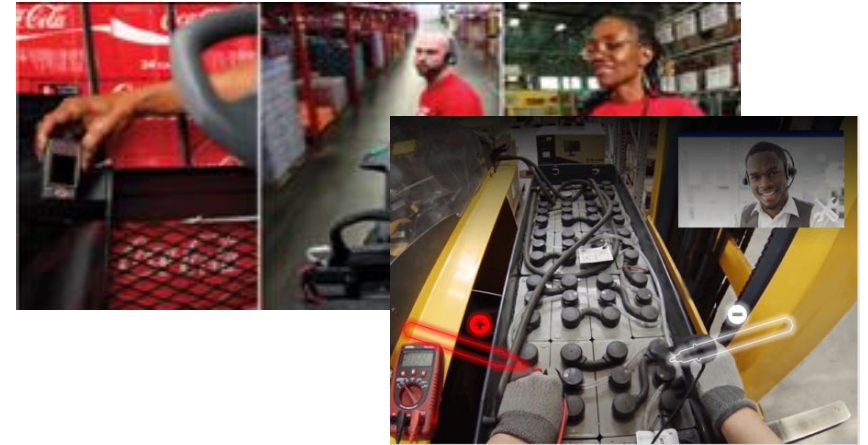
Factory 4.0



Security 4.0



Mobility & Collaboration 4.0



Assett 4.0



People 4.0 Safety & Security



Virtualization 4.0



Connected Machines Connected Products



Connected Plant



Factory Analytics and Big Data



Factory Virtualization

Factory Wireless



Factory Network



Factory Compute

Connected Assets



Connected Machines



Factory Collaboration

Factory Security



Connected



Flexible



Secure



Efficient



Architecture 4.0 – Factory Network

Foundation between Automation Layer and Enterprise Network

- 1 Network
 - Open, Standard-based, Secure, Scalable
- Integrates Manufacturing Systems + Business networks
- Enables real time visibility to business applications
- Reduce downtime
- Improved OEE and productivity
- Increase safety

Case history



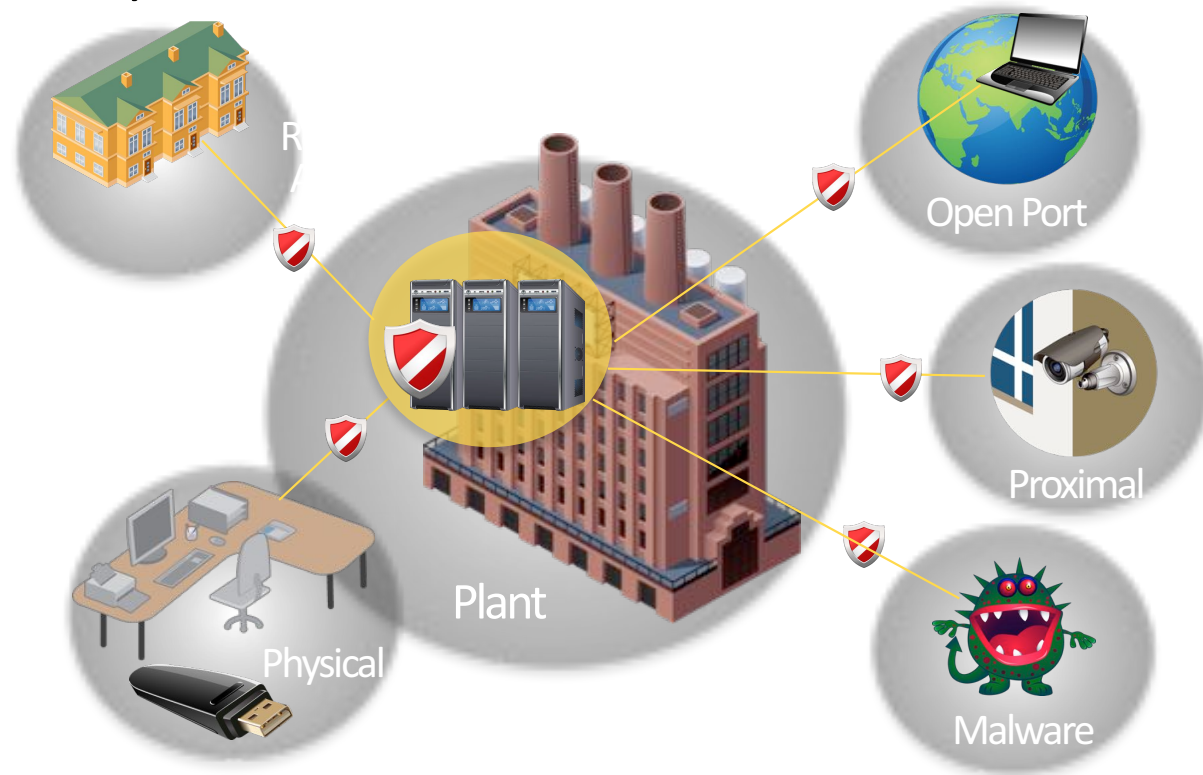


 **MARCEGAGLIA**



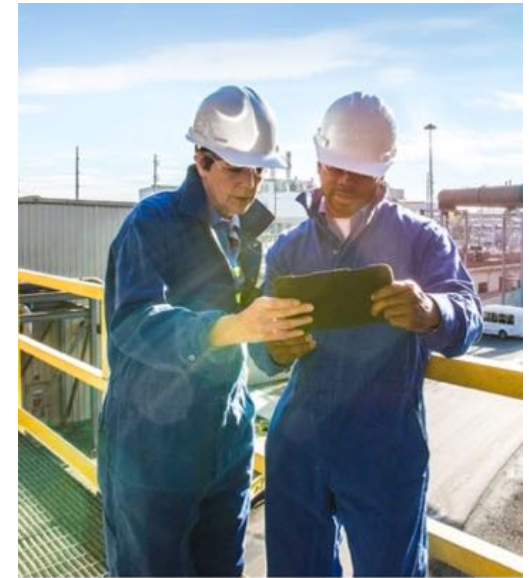
Security 4.0 / Factory Security

- Plant safety, availability, integrity, intellectual property defense
- Business continuity
- Quick crisis management and response
- Reduce risk of inadvertent plant downtime
- Implement new business models such as remote maintenance and remote collaboration
- Improved productivity with Any-time secure and encrypted access to the Industrial Zone for Employees, Contractors and Vendors
- Zone based and Granular security policies based on plant roles, device, location, and time

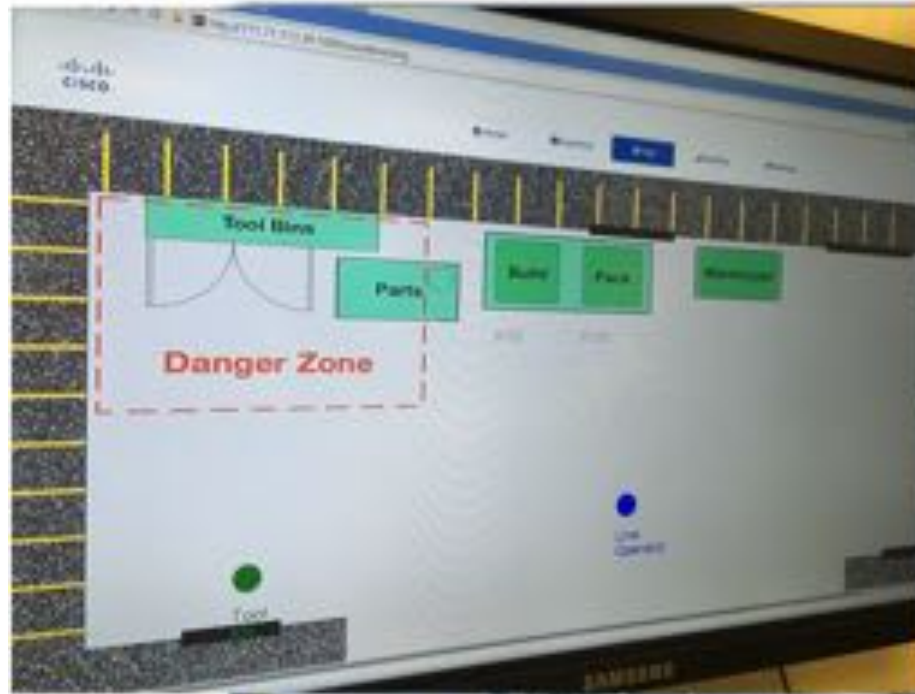


Mobility 4.0

- Faster Assembly Line, Material Flow Efficiency
- Enable BYOD/Mobile workforce productivity
- One network for Barcode readers, VoIP and VoIP picking, Data, Video, Collaboration
- Locate people in case of emergency to Improve Safety, Avoided incident management costs and penalties
- Physical Access Security, Movement of contractors and visitors
- Locate technicians based on skills
- Integrated Maintenance and Improved

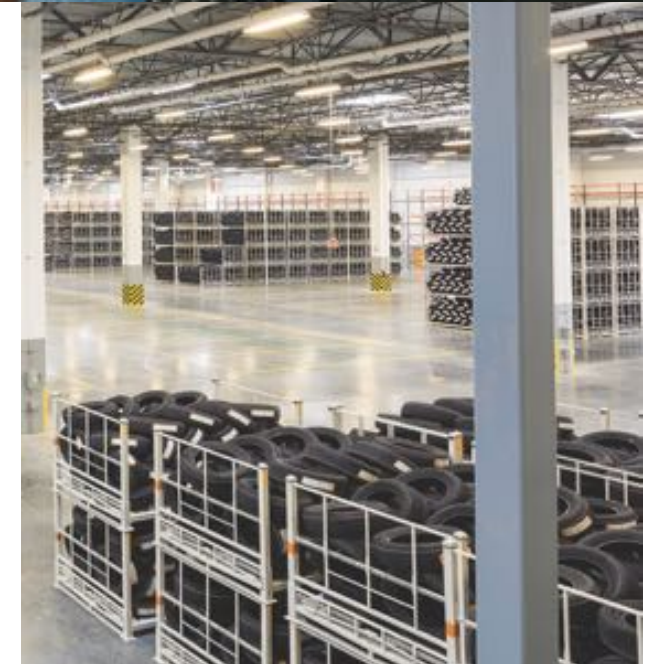


Safety & Security 4.0



Asset 4.0

- Real time Equipment and Asset visibility, location, condition
- Track supplies in transit
- Inventory accuracy
- AGV control
- Improved equipment utilization
- Real time push notification
- Correlate location of asset and operator to minimize down time



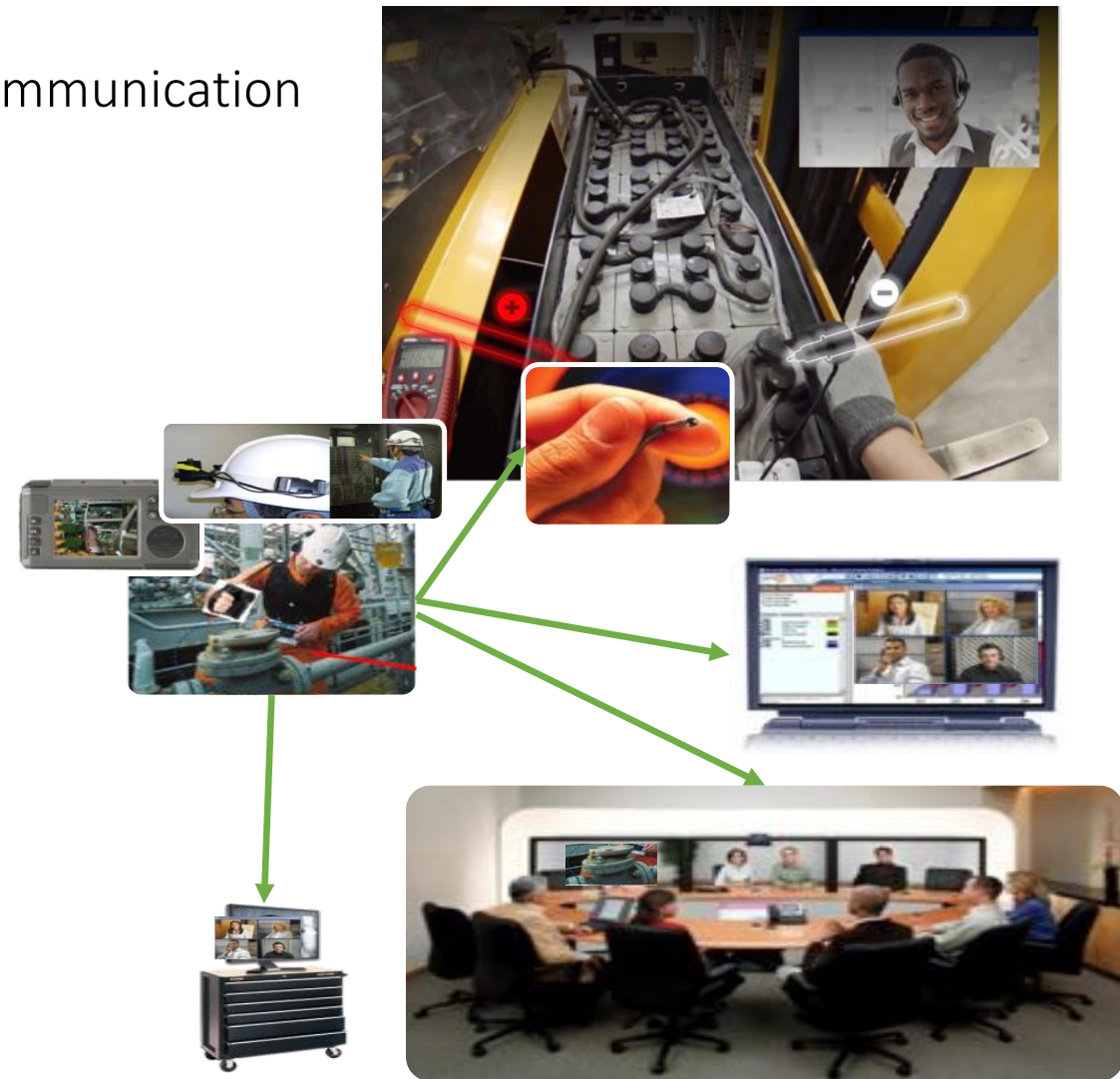
Case history



Collaboration 4.0

Real-time location-based profile-based Communication

- Workforce Management to Improve Safety and Physical Access Security
- Locate and contact nearest people with specific skills
- Voice commands for pickup
- Real-time push notification
- Real-time dialogue with the machine or Remote expert for Maintenance

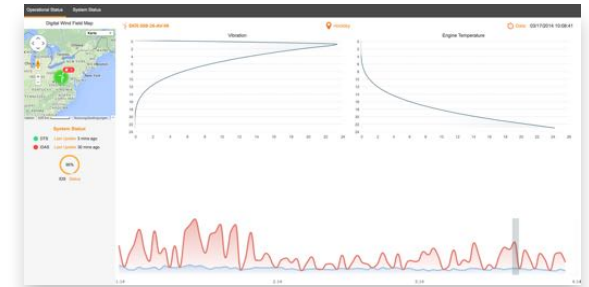


Case history

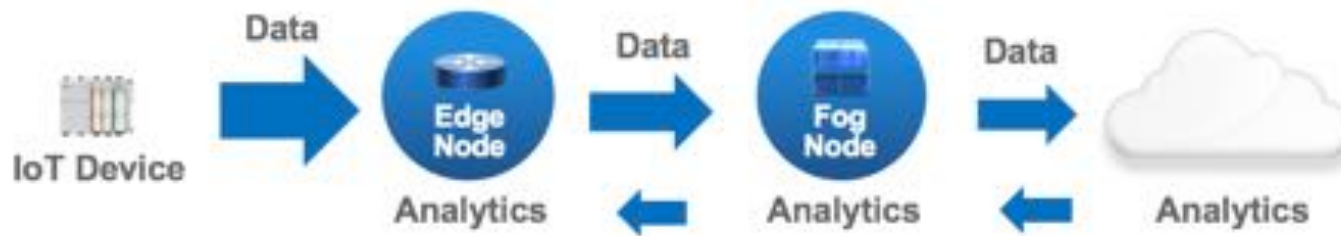


Fog Computing & Data Virtualization 4.0 to enable Edge Analytics

- Enables monitoring, analyzing and reporting, all on a single platform
- Support analytics for IoT environments, handles massive volumes and high velocity of data, enabling analytics at the edge



Analyze Data in the 'Right' Place by Distributing Analytics from Cloud to Edge



Connected Machine / Connected Products

Business model shift from Product to Services

- New revenue stream thanks to new services (predictive maintenance, zero downtime, machine running, Data Analytics, remote support)
- Machine-As-A-Service
- Time to market, Innovation, quality assurance
- Real-time inventory

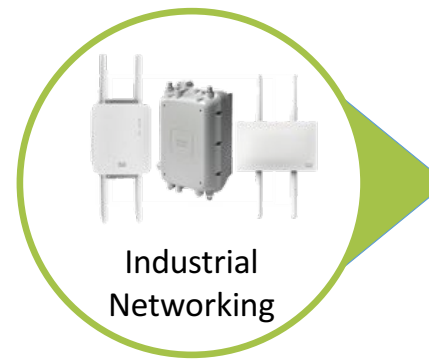
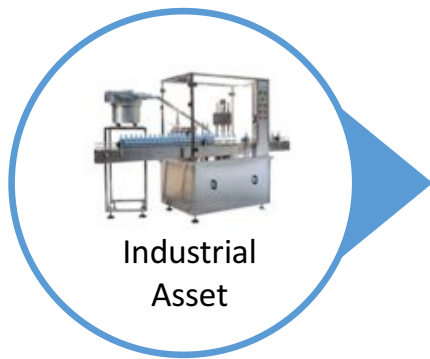




inpeco
automation in healthcare



Retrofit Creating Value for Zero Defects Factories



- Small Form Factor WiFi based End Node with a low cost of installation and easy to manage
- Connect securely to the network every industrial machines and sensors via physical ports (RS485, RS 232) and standard industrial protocols, such as ModBus, CANBus, OPC-UA
- Pre built configuration for a faster and easier integration to the Analytics Platform

- Factory Network is the Foundation, the essential first step of the digital journey, between automation layer and the Enterprise a connectivity
- Connects manufacturing systems and integrates factory floor with business networks
- Enables real time visibility to business applications
- Reduce risk of inadvertent plant downtime and risk intellectual property loss

- Advanced Machine Learning Platform able to self-learn the behaviors of the machines to anticipate increasingly earlier possible losses of processes and quality
- Specific pre-built algorithms and data models to address faster the 6 big losses of the Overall Equipment Effectives (OEE)
- Deployed in different operational models : Cloud, On Premise, Hybrid

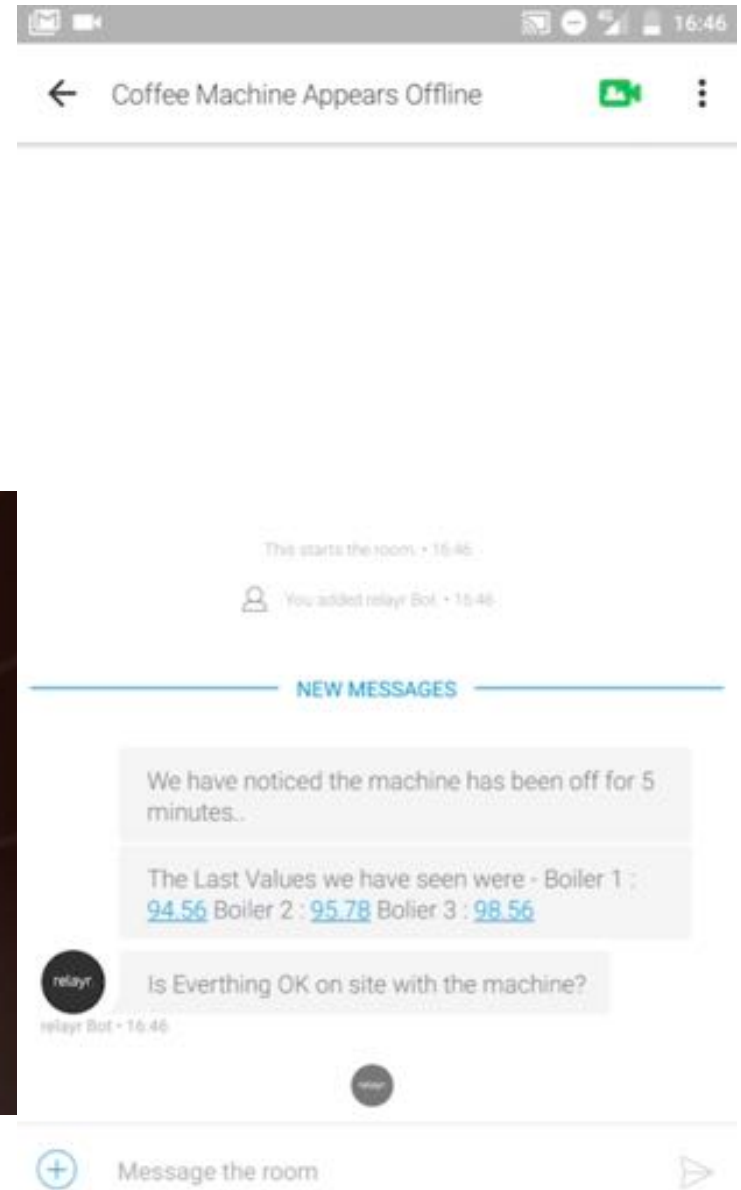


la marzocco

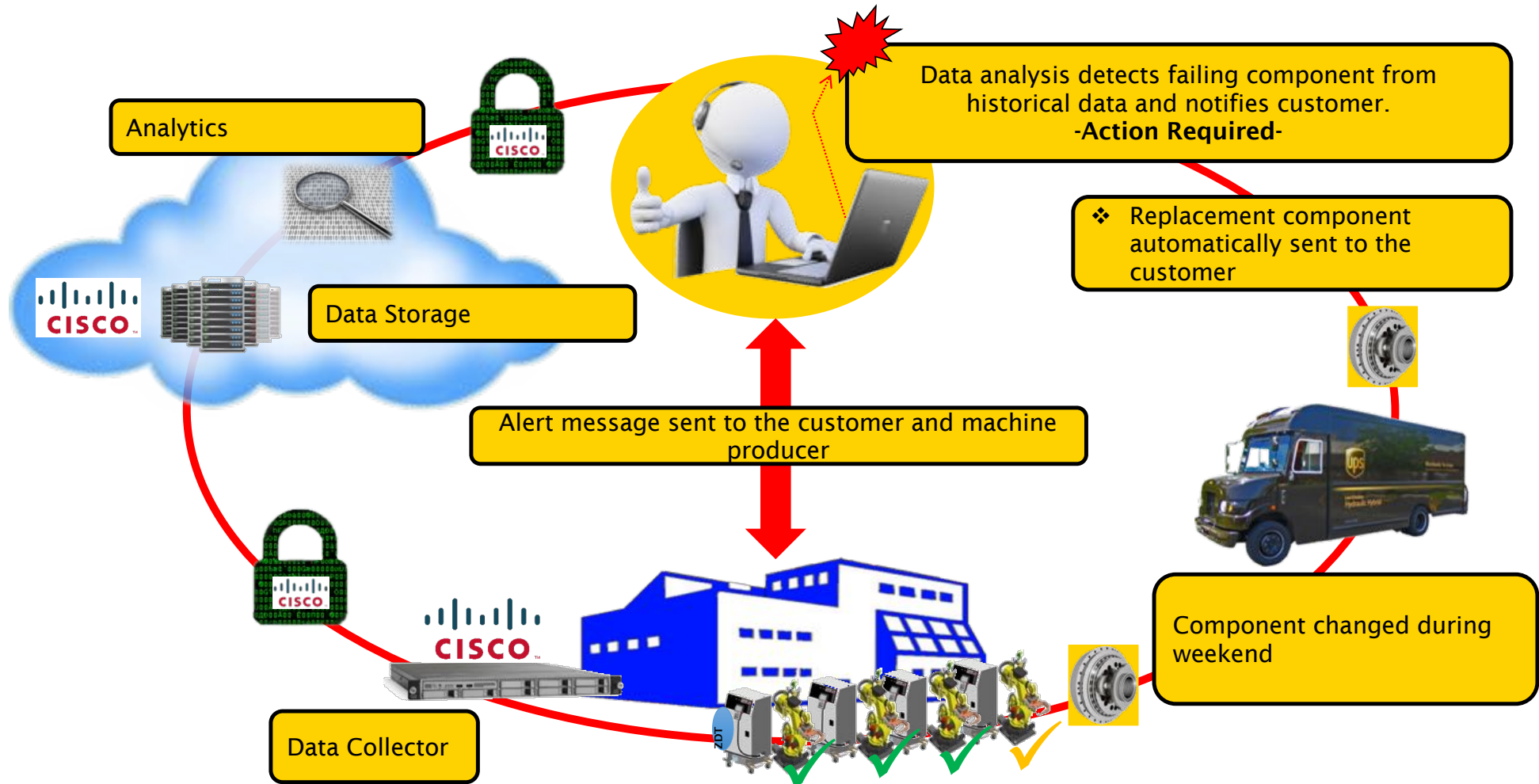
handmade in florence



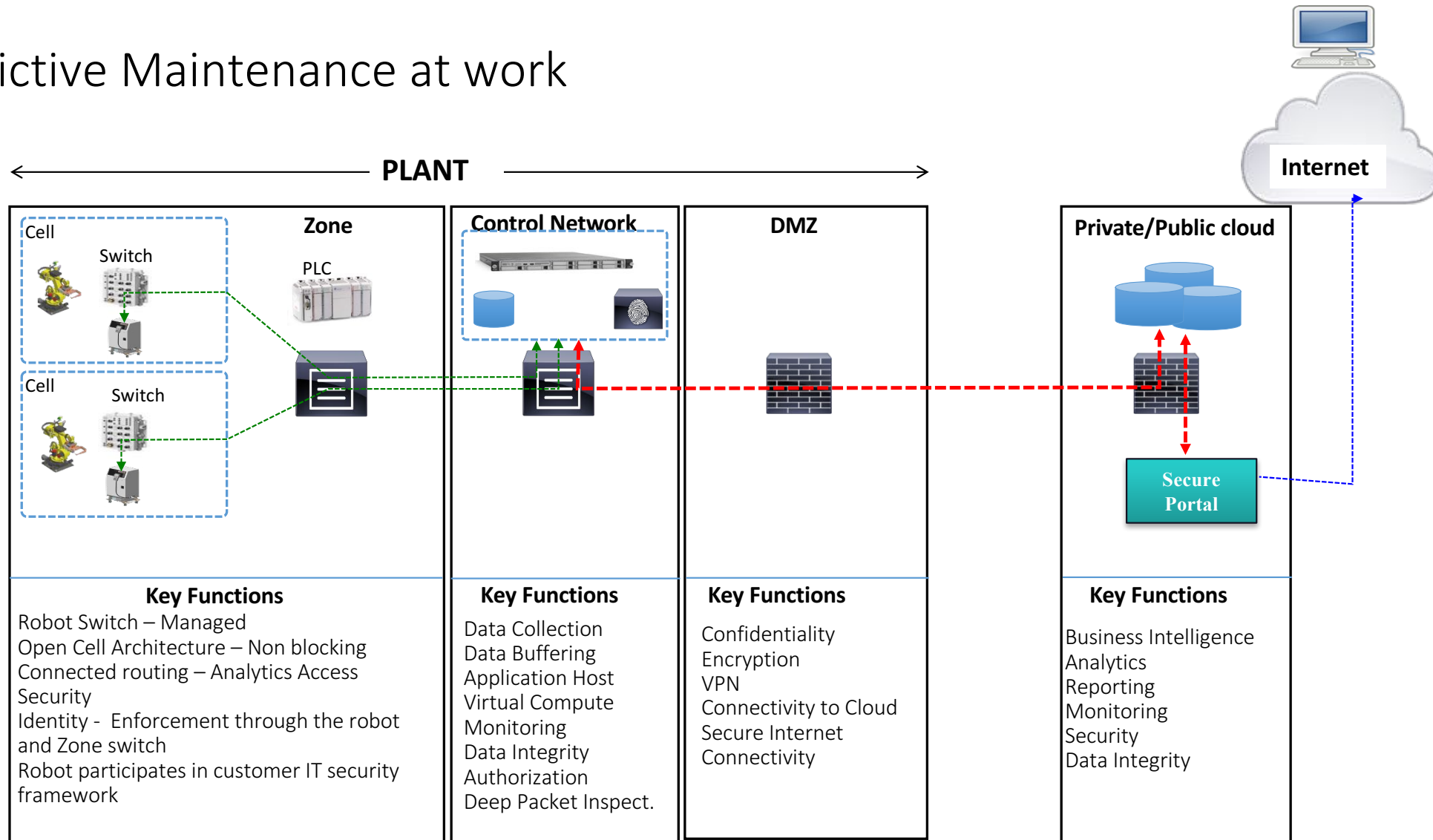
Human- Machine Interaction



Predictive Maintenance at work



Predictive Maintenance at work



Why Cisco?

Strong Ecosystem
Technology Partners
System Integrators
Startup

Validated Designs
Proven and tested architectures to
reduce deployment risk, speed time
to market and reduce time for PoC

One Unified Converged IP Network
Open standards vs. proprietary
Reduced TCO, simplified management

End-to-end network that enables
more than Just connectivity
Computing from Edge to Cloud
Supports Big Data and Analytics
Centralized management of everything
Security across entire platform
Built for the future and flexible growth