



Digitalizzazione dell'Industria manufatturiera

Soluzioni per una manutenzione intelligente

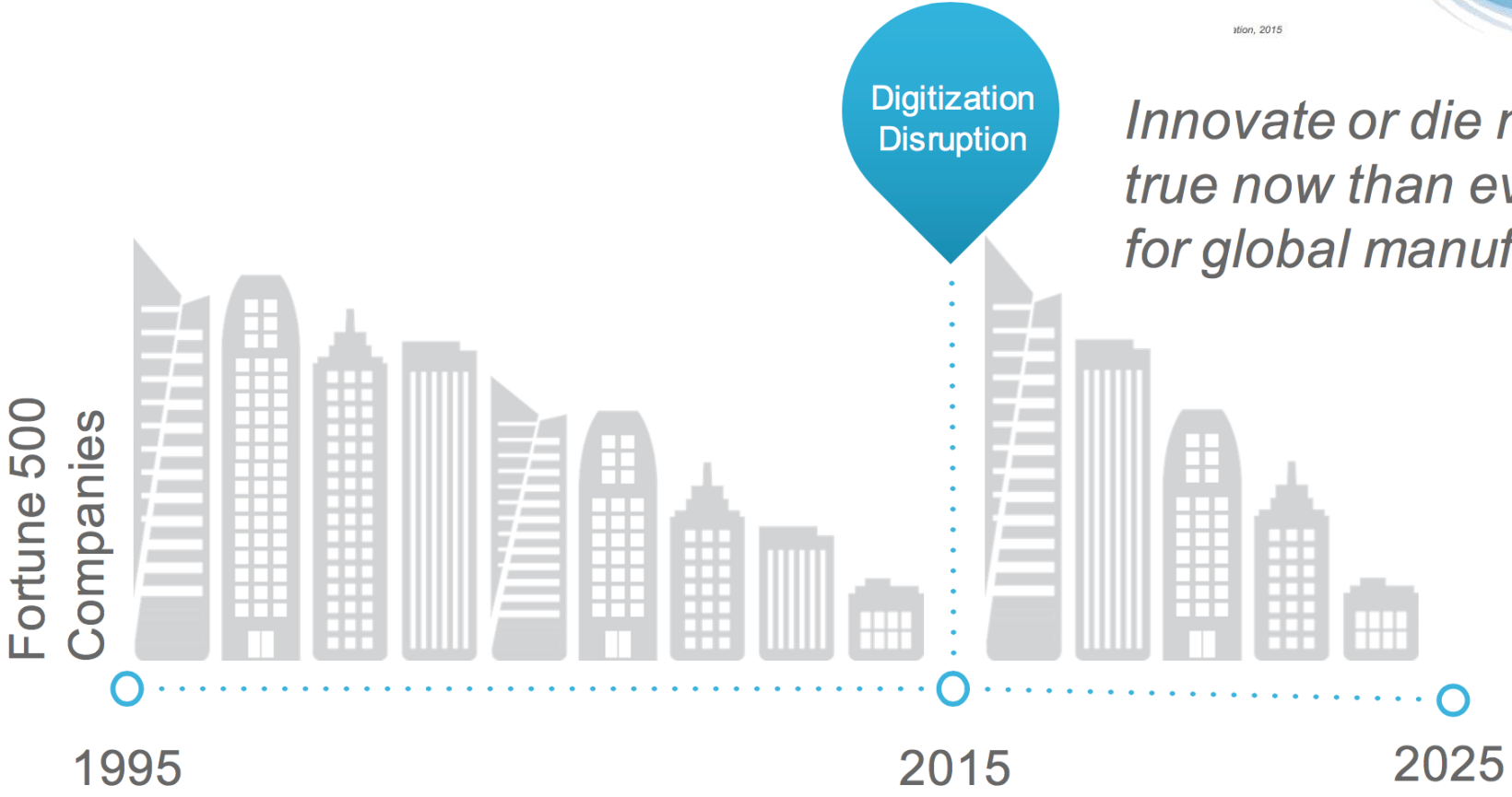
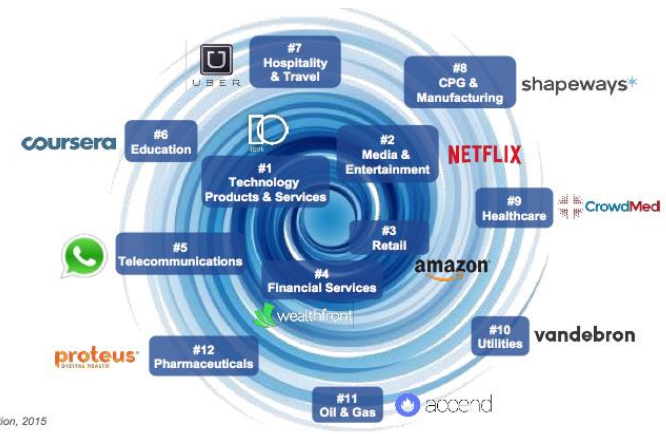
Matteo Masi

Sale Specialist Industry 4.0

mamasi@cisco.com

Digitization

Disrupt or Be Disrupted



Innovate or die more true now than ever before for global manufacturers



Industry 4.0

=

Digital Transformation of Manufacturing

The use of technology to radically improve operations.

Digital Manufacturing Driving Business Outcomes



**Reduced
Downtime**
48%

Unplanned
downtime down
from 11%
to 5.8%



**Reduction in
Defects**
49%

Defect rate
down from
4.9%
to 2.5%



**New Product
Introduction**
23%

New product
introduction cycle
time reduced from
15 to 11



**OEE
Improvement**
16%

Average OEE
improved
from
74% to 86%



**Improved
Inventory**
35%

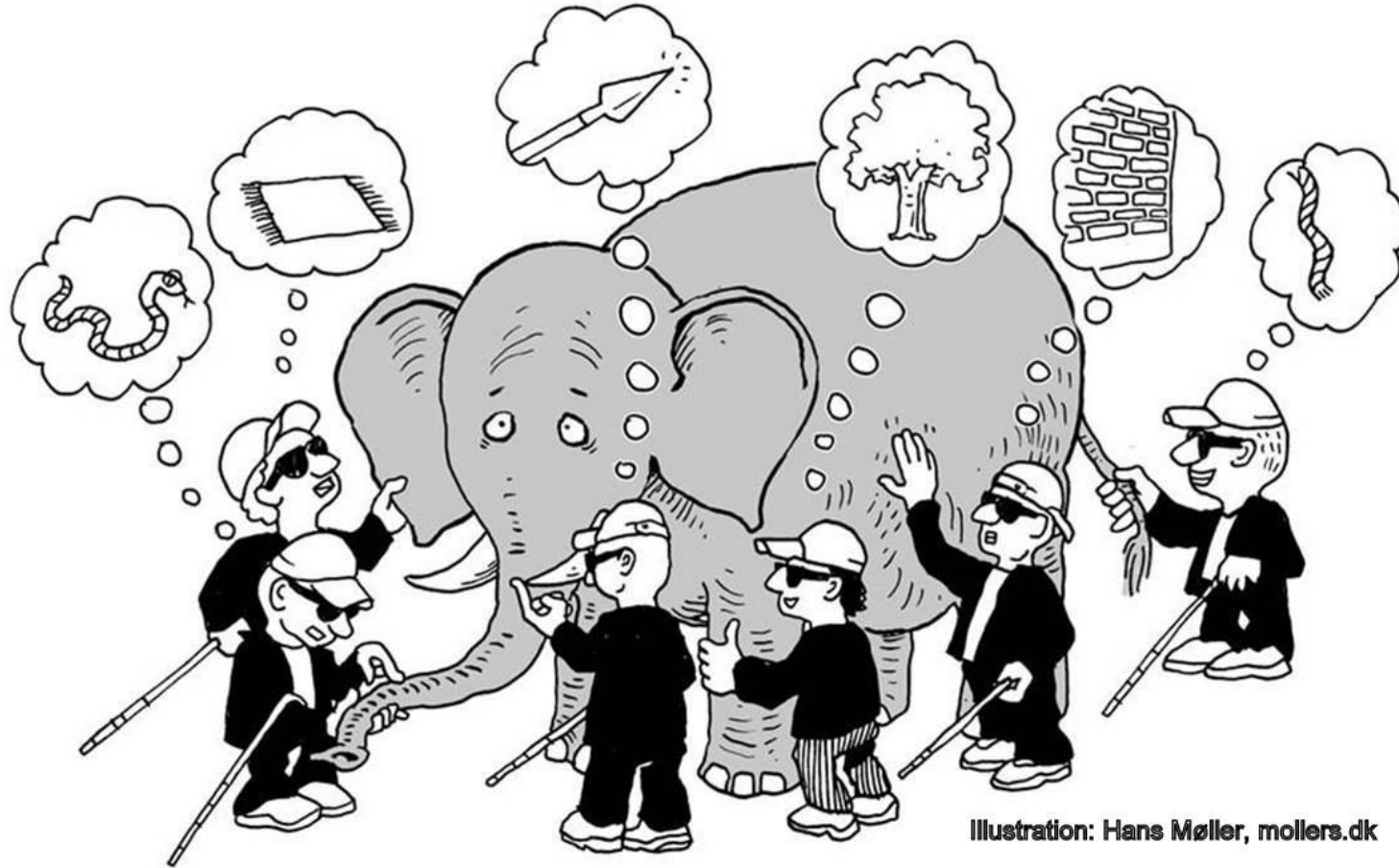
Inventory
turns increased from
14 to 19



**Reduction in
Energy Use**
18%

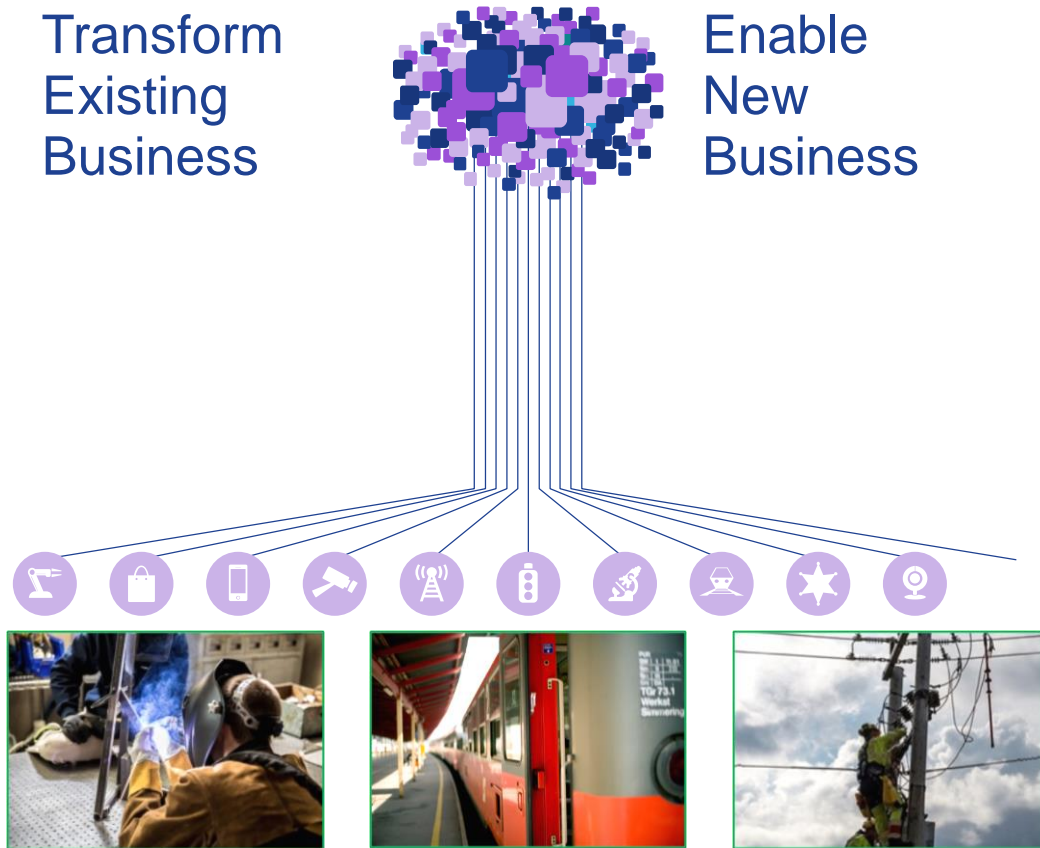
Annual energy
cost down from
\$8.4M
to \$6.9M

What's IoT? What's Industry?



A Common View of IoT

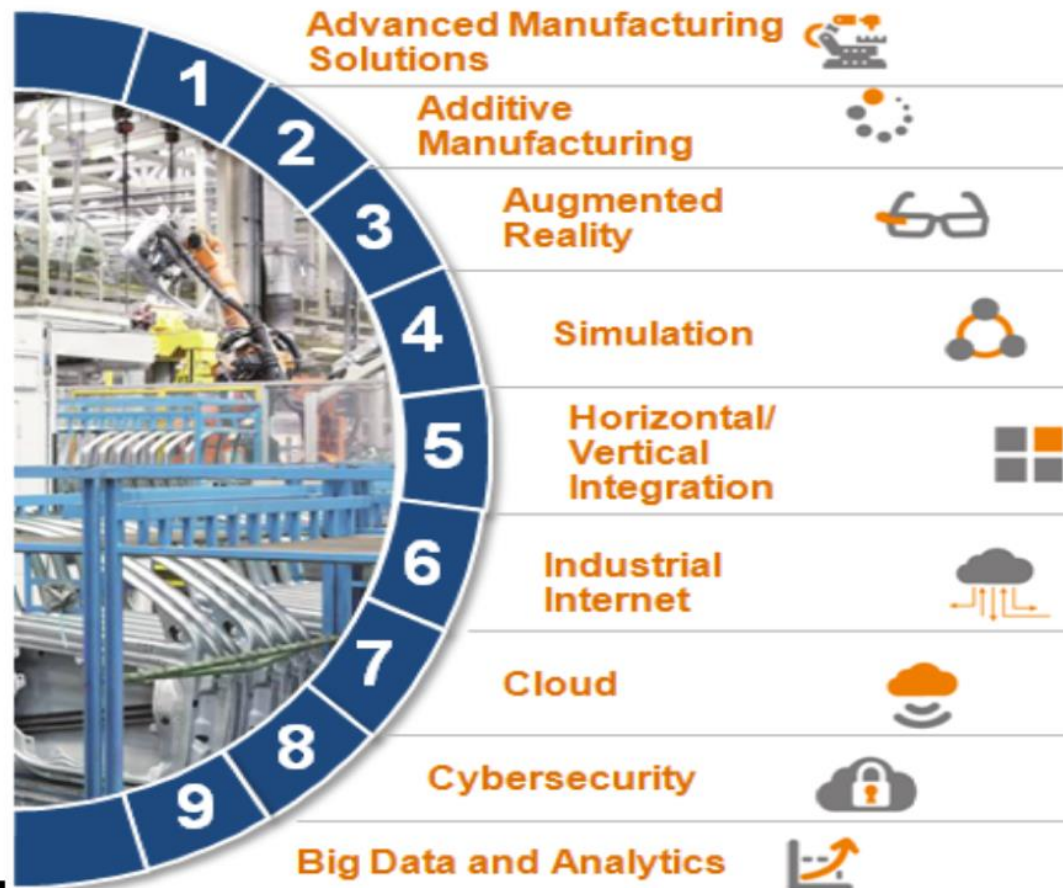
APPLICATIONS: IoT Unlocks Digital Business Value



Where Is the Value

- 50 billion smart devices by 2020
- Convergence across organizations (IT, OT, HR)
- <1% of data currently used; more can be used for optimization and prediction
- Interoperability across siloed systems required to capture IoT value

Industry4.0: The power of combination



**Investimenti in tecnologie
Agrifood , Bio-based economy e a supporto
dell'ottimizzazione dei consumi energetici**

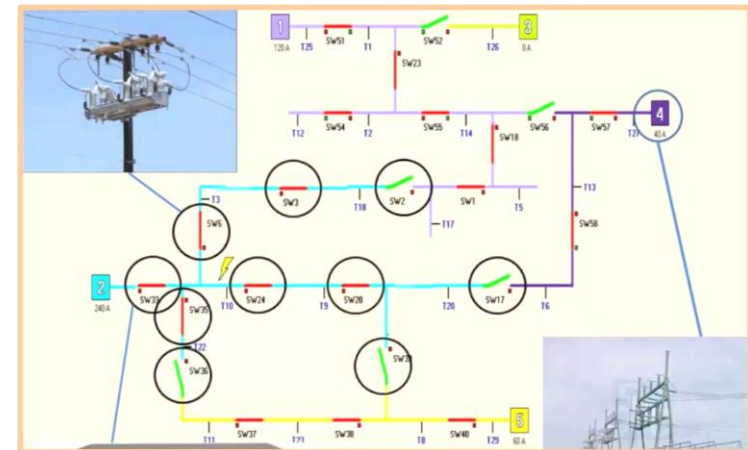
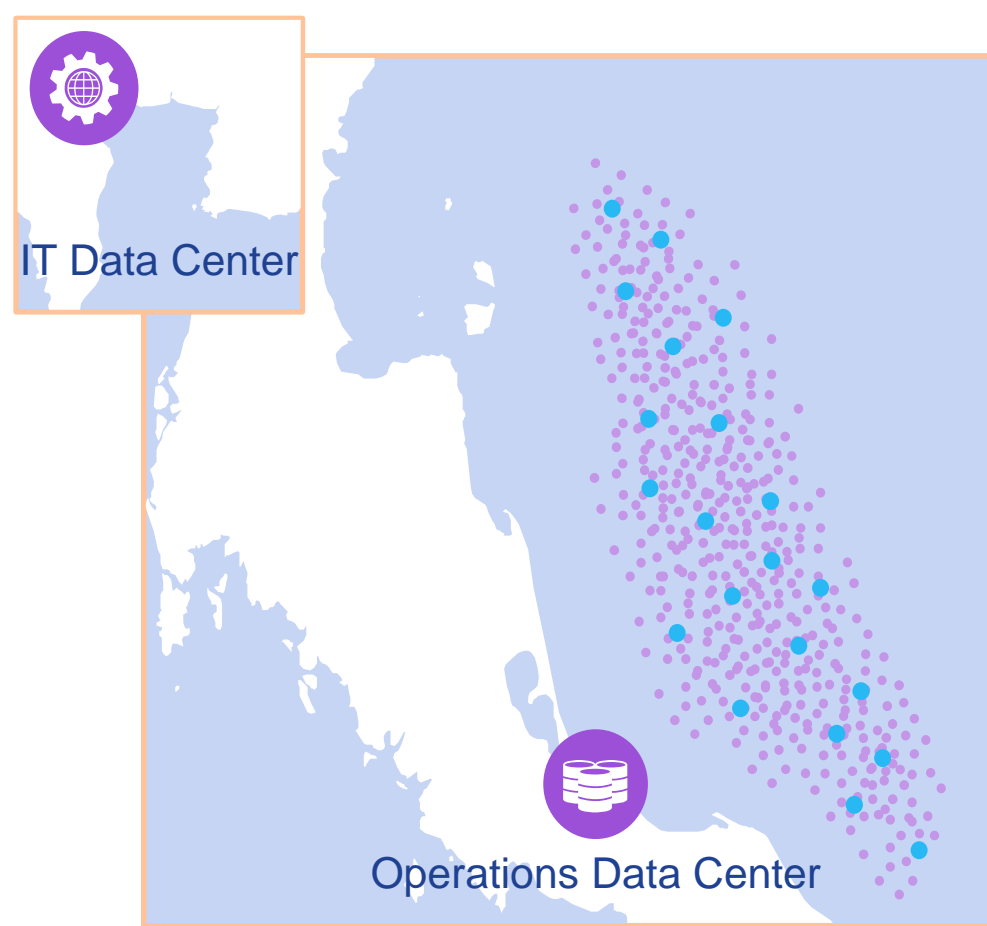
The Real World

Data Constraints

- Acoustic and temperature sensors: 1 GB/day each
- ## Latency Constraints

Smart grid fault restoration

- Response latency of < 50 ms



Cisco Industry 4.0: Strategy Execution



Build

Partner

Co-Develop

One Unified and Secure Converged IP Network



Open standards vs. proprietary

The Connected Factory



Factory Analytics
and Big Data



Factory
Virtualization

Factory
Wireless



Factory
Network



Factory
Compute

Connected
Assets

Connected
Machines

Factory
Collaboration

Factory
Security



Digital Manufacturing Journey

3

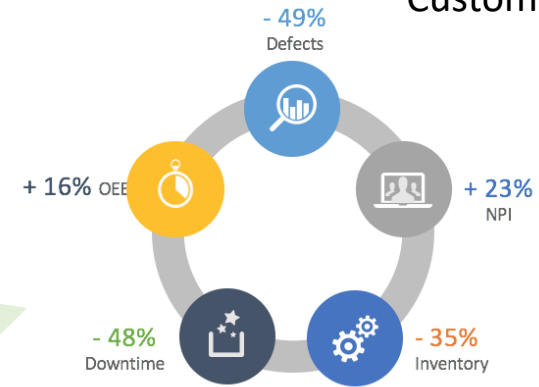
Digital Supply Chain

Production
Logistic
Suppliers
Sales
Customers

2

Advanced services:

Collaboration
Asset tracking
Safety
Analytics



1

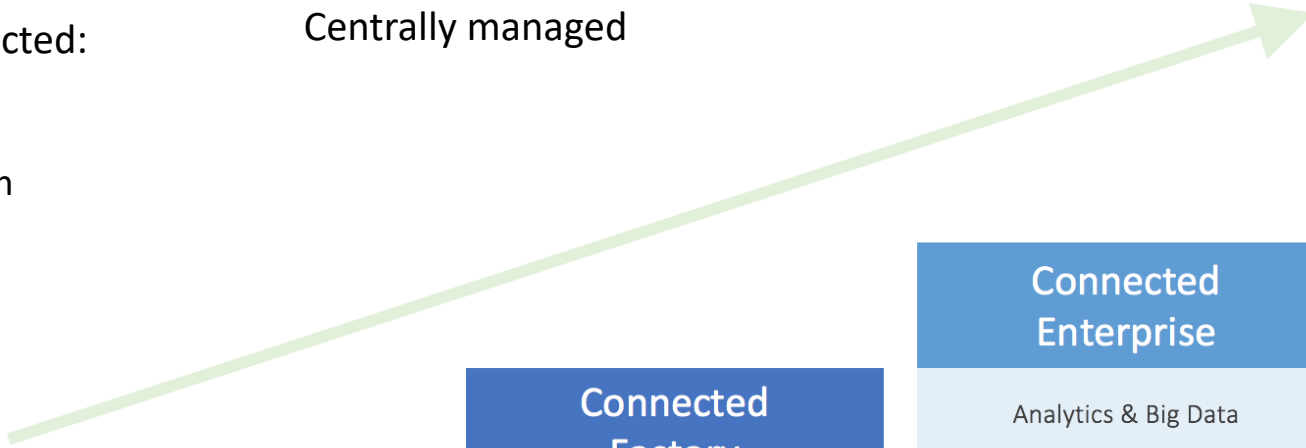
Factory Network:

Open standard-based
Integrated
Secure
Centrally managed

TODAY

Plant partially connected:

Single layer LAN
Low segmentation
Low security
Low Security
Proprietary silos



Off-Line

Connected Factory

- Factory Network
- Factory Security
- Factory Wireless

Connected Enterprise

- Analytics & Big Data
- Virtualization & Compute
- Connected Machines
- Factory Collaboration
- Location Services

Supply Chain Orchestration

- Supply Chain Collaboration (SXP)
- Design Collaboration

Architecture 4.0 – Factory Network

Foundation between Automation Layer and Enterprise Network

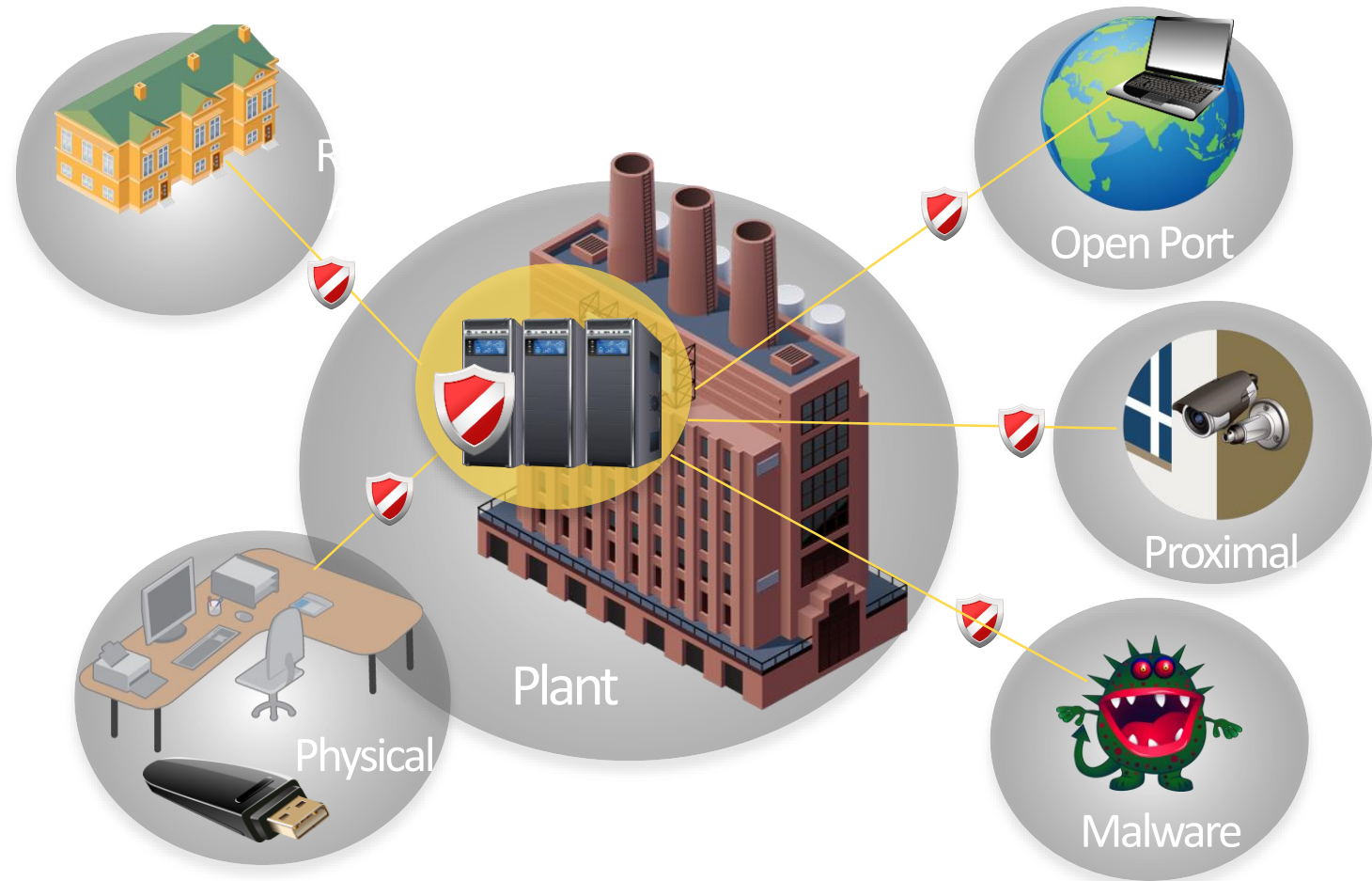
- 1 Network
 - Open, Standard-based, Secure, Scalable
- Integrates Manufacturing Systems + Business networks
- Enables real time visibility to business applications
- Reduce downtime
- Improved OEE and productivity
- Increase safety

Case history



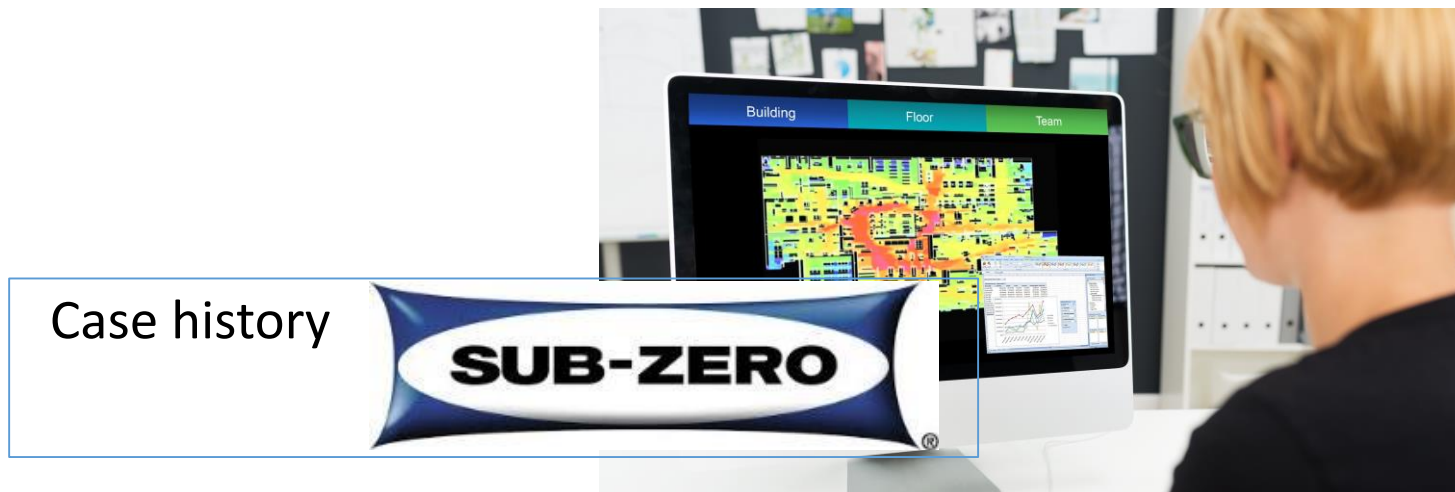
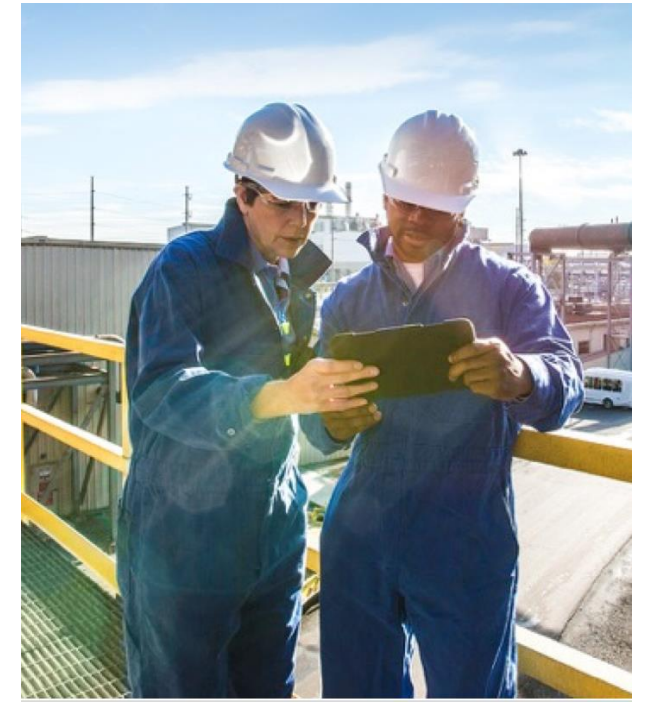
Security 4.0

- Plant safety, availability, integrity, intellectual property defense
- Business continuity
- Quick crisis management and response
- Security North-South
- Security West-East



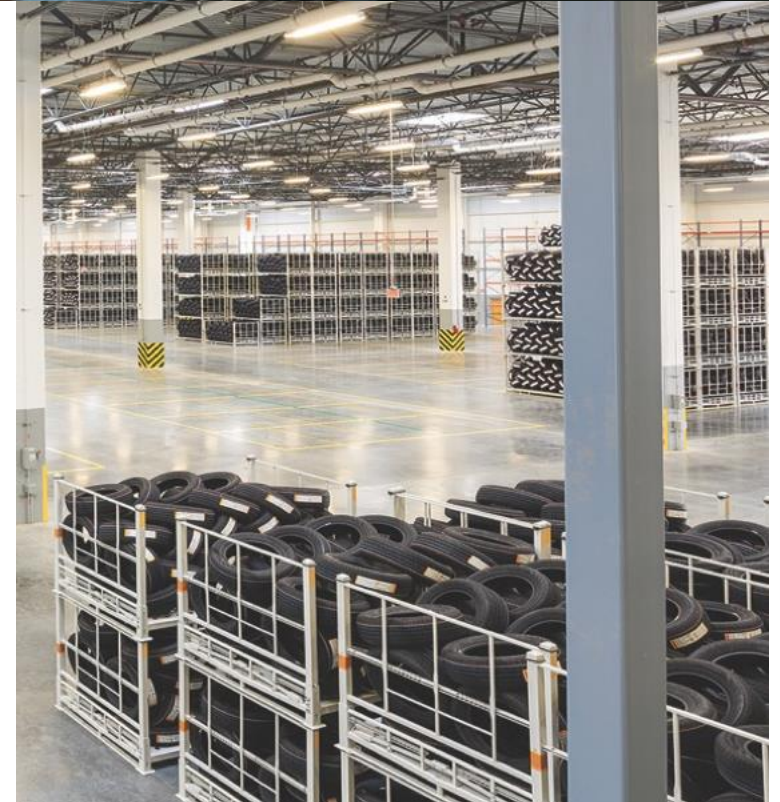
Mobility 4.0

- Faster Assembly Line, Material Flow Efficiency
- Enable BYOD/Mobile workforce productivity
- One network for Barcode readers, VoIP and VoIP picking, Data, Video, Collaboration
- Locate people in case of emergency to Improve Safety, Avoided incident management costs and penalties
- Physical Access Security, Movement of contractors and visitors
- Locate technicians based on skills
- Integrated Maintenance and Improved



Asset 4.0

- Real time Equipment and Asset visibility, location, condition
- Track supplies in transit
- Inventory accuracy
- AGV control
- Improved equipment utilization
- Real time push notification



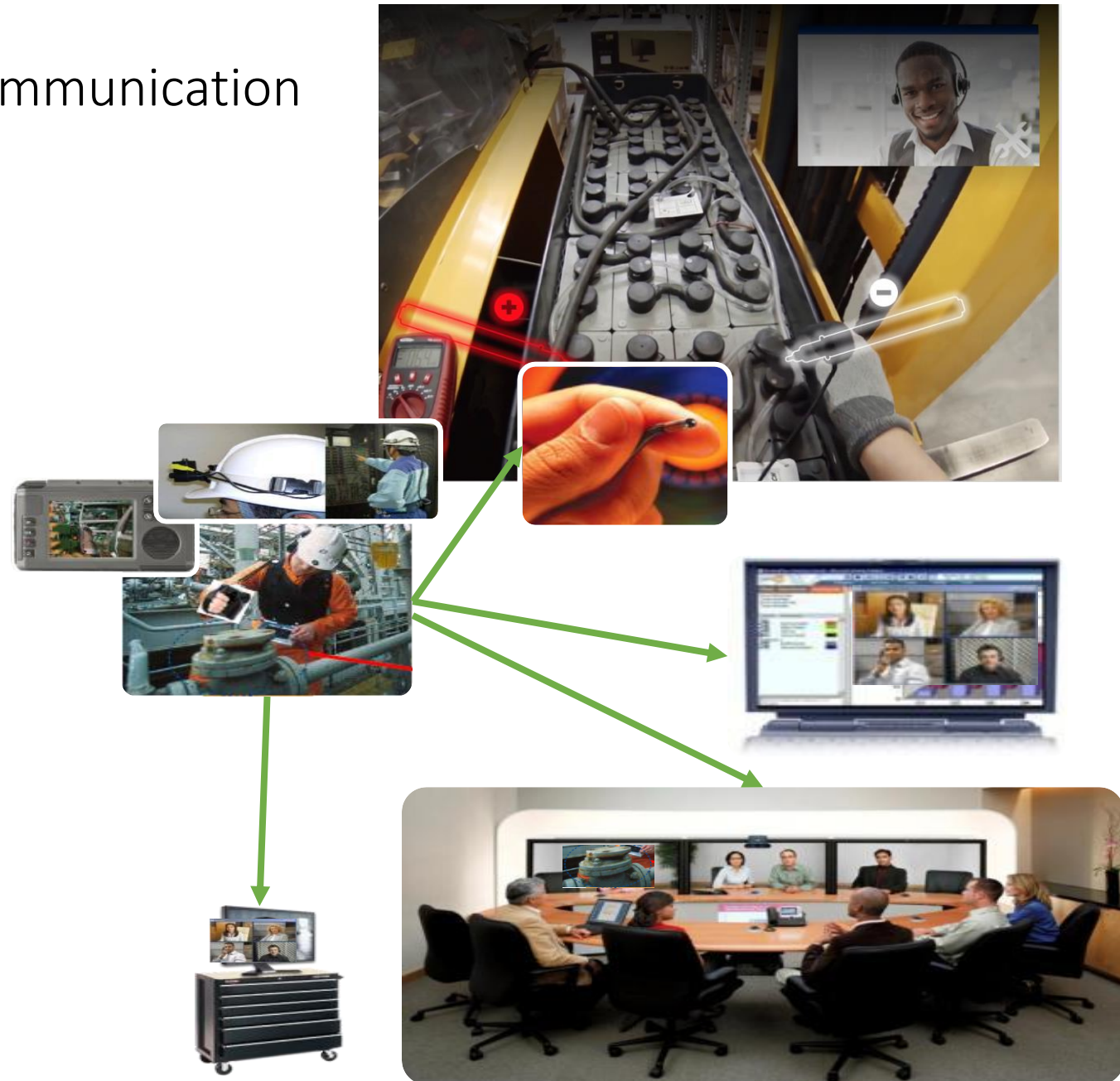
Case history



Collaboration 4.0

Real-time location-based profile-based Communication

- Workforce Management to Improve Safety and Physical Access Security
- Locate and contact nearest people with specific skills
- Voice commands for pickup
- Real-time push notification
- Real-time dialogue with the machine or Remote expert for Maintenance



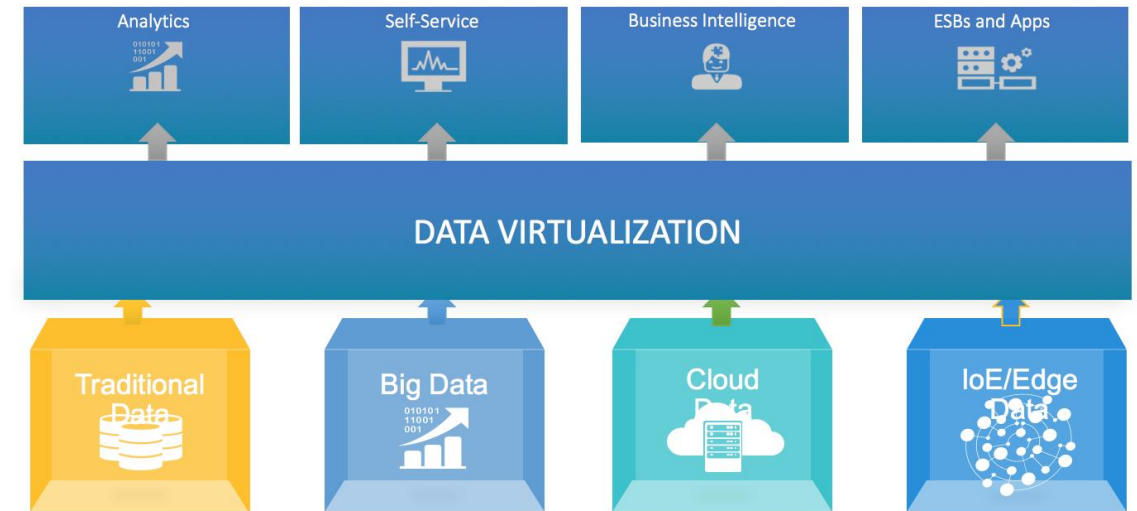
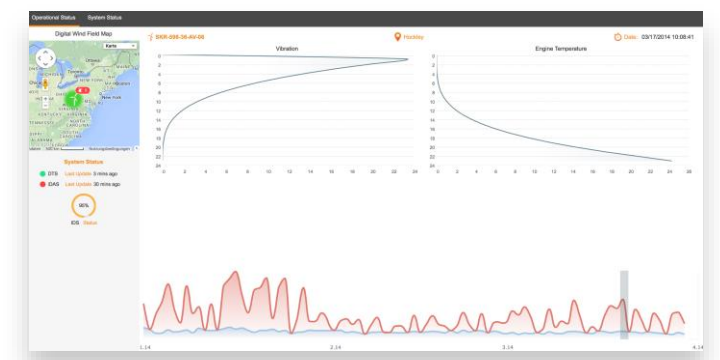
Case history



Virtualization 4.0

and Fog Computing to enable Edge Analytics

- Enables monitoring, analyzing and reporting, all on a single platform
- Support analytics for IoT environments, handles massive volumes and high velocity of data, enabling analytics at the edge



Analyze Data in the 'Right' Place by Distributing Analytics from Cloud to Edge



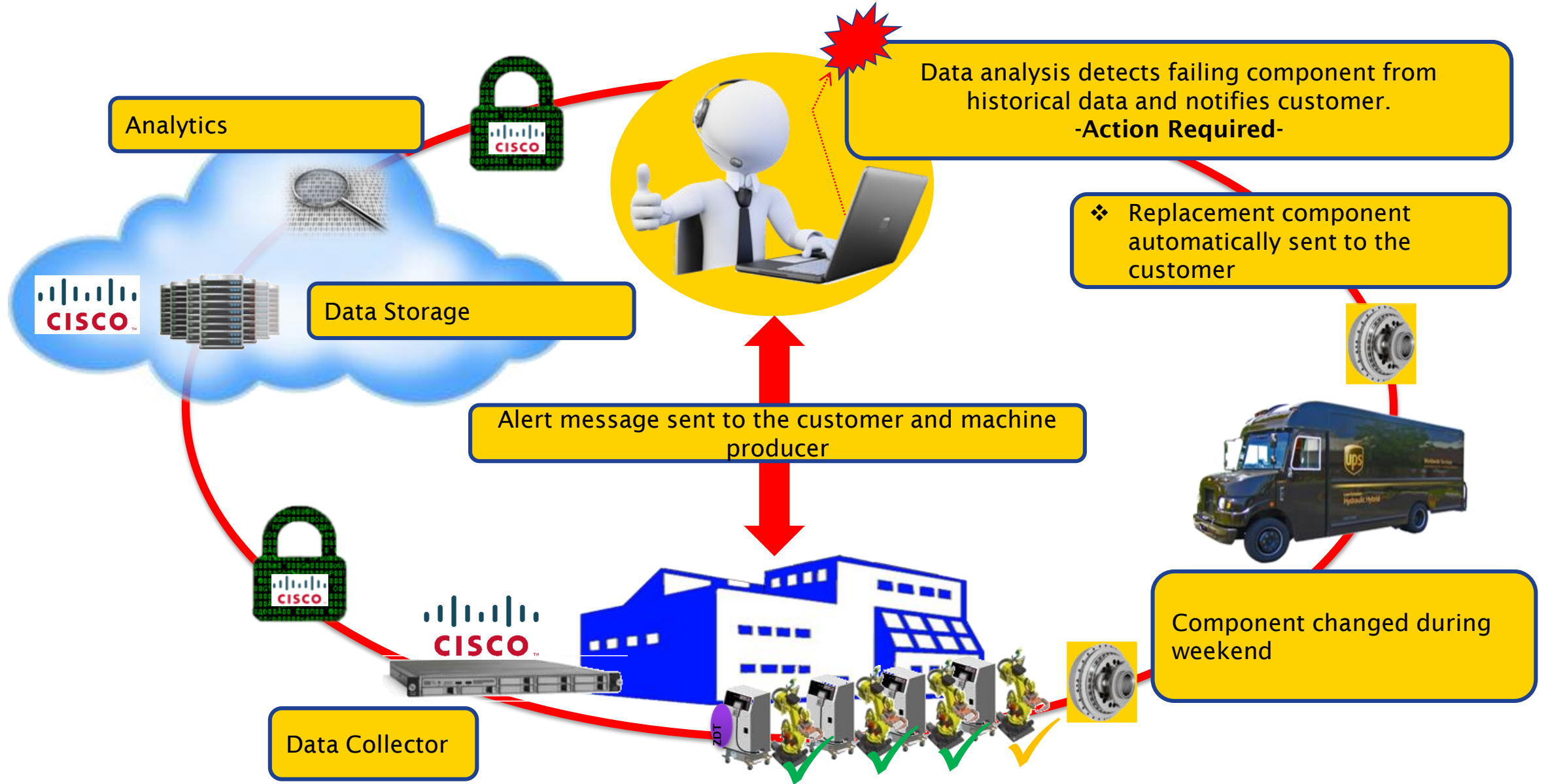
Connected Machine / Connected Products

Business model shift from Product to Services

- New revenue stream thanks to new services (predictive maintenance, zero downtime, machine running, Data Analytics, remote support)
- Machine-As-A-Service
- Time to market, Innovation, quality assurance
- Real-time inventory



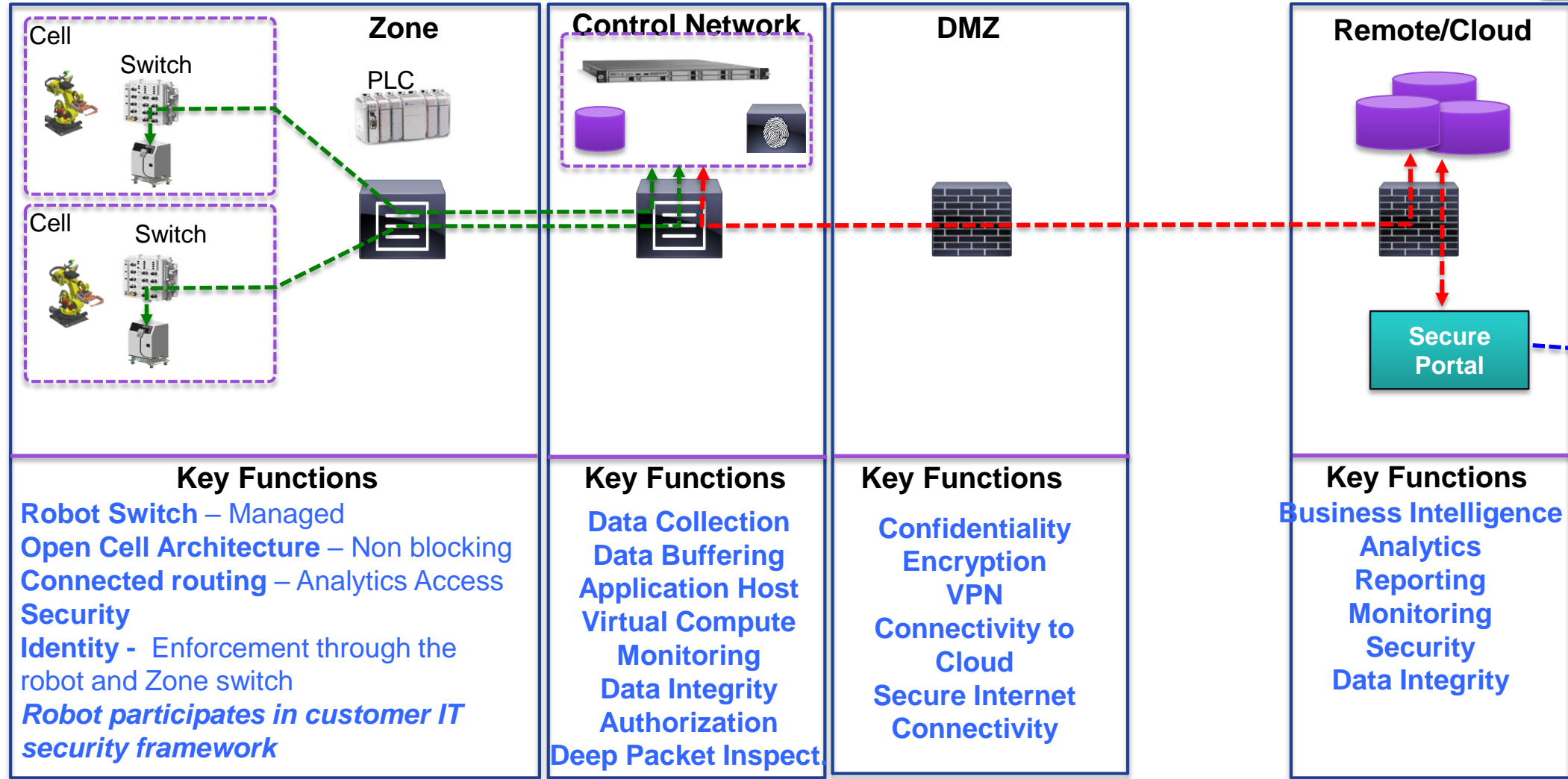
Predictive Maintenance at work





Internet

← PLANT →





la marzocco

linea pb



Solenoid Valve Solid State Relay



Flow Meter
0 Temperature
98.40°C

Load Cell
6.80



Solenoid Valve Solid State Relay



Flow Meter
0 Temperature
188.00°C

Load Cell
0.00

LaMarzocco 12:31
6.8 00 0.0



Solenoid Valve Solid State Relay Solenoid Valve



Flow Meter
0 Temperature
188.00° Solid State Relay

Load Cell
0.00 Temperature
124.20°C

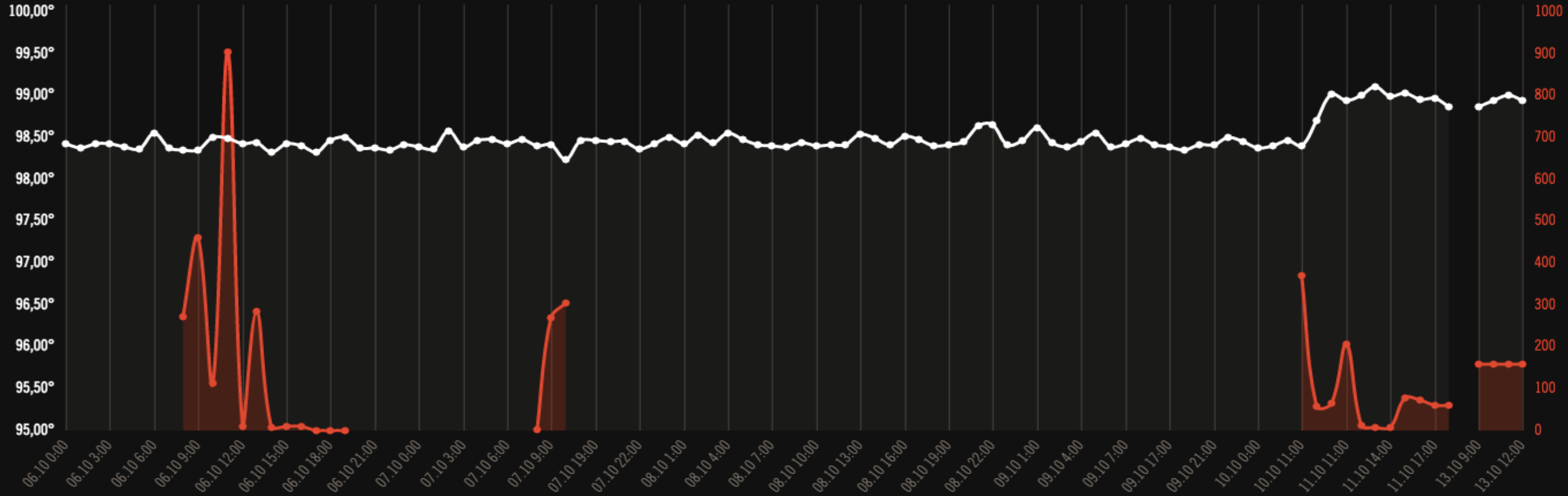


history

06.10.2016 - 13.10.2016

Coffee Boiler 1 Temperature

Flow Meter 1



Località la Torre, 16, 50032 Scarperia FI, Italy

Why Cisco?

Strong Ecosystem
Technology Partners
System Integrators
Startup

Validated Designs
Proven and tested architectures to
reduce deployment risk, speed time to
market and reduce time for PoC

One Unified Converged IP Network
Open standards vs. proprietary
Reduced TCO, simplified management

End-to-end network that enables
more than Just connectivity

Computing from Edge to Cloud
Supports Big Data and Analytics
Centralized management of everything
Security across entire platform
Built for the future and flexible growth